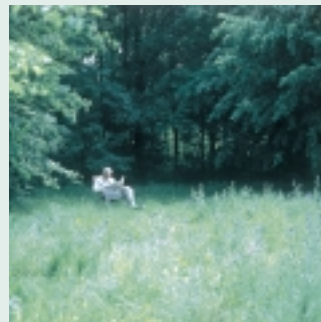


Final Programme

Forestry Serving Urbanised Societies

IUFRO European Regional Conference,
in collaboration with EFI
Copenhagen, Denmark, August 27-30, 2002

Organised in conjunction with the 9th EFI Annual Conference
Copenhagen, Denmark, August 26, 2002



Organised by:



IUFRO, International
Union of Forest Research
Organizations



EFI

European Forest Institute



Skov & Landskab

Danish Centre for Forest,
Landscape and Planning

The Urban Dimension of Forestry

The science and profession of forestry are to an increasing extent influenced by ongoing urbanisation. Forests and their caretakers have to meet a range of diversified demands for goods and services from societies in which urban values and interests prevail. Environmental, educational and especially recreational aspects are of increasing importance in the planning and management of forests in an urbanised society. In addition, due to afforestation schemes and urban expansion, more forests are now situated in or near urban areas. As a result, forestry needs to become better at serving urbanised societies. Innovative approaches and strategies to meet this demand involving a wide range of professions, disciplines and stakeholders, will be presented and discussed at the conference.



Objectives

- To define the role of forestry and forest research within an increasingly urban society.
- To identify and explore promising scientific & technological findings with regard to the urban aspects of forestry and the prevailing role of urban decision makers.
- To identify new directions & strategies in forest research connected to an urban view of forestry in the context of extended networking within forest research and with other disciplines.

Conference Sessions

The *plenary sessions* of the conference will have several central themes, extending across the IUFRO divisional interests. Speakers from different disciplines will shine their light on how forestry can serve urbanised societies. Following the plenary sessions, there will be a range of *parallel sessions* organised by IUFRO Divisions, Task Forces, Research Groups and Working Parties as well as the European Forest Institute. The contents of most parallel sessions have been determined after a selection of abstracts and can be found in the programme on page 6 and 7.

Special Meetings & Events

RECOGNITION – Causes and consequences of increased forest growth in Europe

An open seminar on Wednesday 28 August (13.00-16.00 hrs & 16.30-18.30 hrs) will present the final results and conclusions of the project *Relationships between Recent Changes of Growth and Nutrition of Norway Spruce, Scots Pine, and European Beech Forests in Europe (RECOGNITION)*. This project has been an EU-FAIR project led by the European Forest Institute. The seminar will present and discuss the project findings and include a press conference. For more information, please refer to: www.efi.fi/projects/recognition/

Launch of New Information Services

The *BIOME Forestry Gateway*, an online guide to Internet resources on forest-related subjects, will be launched on Tuesday 27 August at 16.00 hrs during session 6.03.00 (1). Developed in collaboration with the Oxford Forestry Institute, METLA, Finland, and the Global Forest Information Service, this UK-based gateway incorporates many of the resources of the WWW Virtual Library for Forestry.

The *IUFRO International Directory of Forest Information Services: Libraries, Documentation Centres and Subject Specialists* will be launched on Wednesday 28 August at 16.30 hrs during session 6.03.00(2). This new online directory aims to identify all those working in forest information and help coordinate their efforts for the Global Forest Information Service.

Launch of “Urban Forestry & Urban Greening” – a new journal

On Wednesday 28 August (18.30-20.00 hrs), the editors-in-chief and Urban & Fischer Publishers will host the formal launch of “Urban Forestry & Urban Greening”. This new, refereed scientific journal aims at presenting high-quality research with urban and peri-urban woody and non-woody vegetation as its main topics. During the launch, the first issue of this international journal will be presented.

GFIS – IUFRO Global Forest Information Service

On Thursday 29 August (14.00-16.00 hrs), a special session will present IUFRO’s Global Forest Information Service (GFIS). The aim of GFIS as a globally operating forest information service is to enhance access to and provision of world-wide forest-related information through the Internet. GFIS will facilitate user-friendly access to electronically and non-electronically available information and improve the dissemination and quality of forest-related data and information on forest resources, forest policy, criteria and indicators for sustainable forest management, research activities, and other timely and relevant issues.

Technical Excursions, Friday August 30

The conference excursion will provide the participants with an excellent taste of forests and forestry serving the Øresund Region (Sound Region), the urbanised region with Greater Copenhagen and Malmö as its main cities. The tour will go to the famous Jaegersborg Deer Park north of Copenhagen. From there it continues to Vestskoven, a thirty-year old afforestation project west of Copenhagen, and finally to Sweden where we will visit the Alnarp Landscape Laboratory. Coaches will leave from *Falconer Center* at 8.30.

A parallel excursion especially arranged for IUFRO Division 5, focuses on the Danish hardwood industry. The tour will look at timber processing, furniture making and the use of wood for energy production. Coaches will leave from *Falconer Center* at 8.15.

Urbanised Societies

Social Events

Reception at Copenhagen City Hall, Tuesday, August 27

The reception is to be hosted by the City Council of Copenhagen at the City Hall (Town Hall Square Rådhus-pladsen). All Conference participants are invited. After the reception you are invited to enjoy the beautiful Tivoli Gardens on your own. Coaches will start leaving *Falconer Center* at 17.45. *Please note that the reception will start punctually at 18.50 hrs.* Dress: smart casual.

Conference dinner at the “Sea Fort Trekroner”, Thursday, August 29

After 20 minutes by boat participants will arrive at the old sea fort which lies at the entrance to Copenhagen Harbour. The foundation of the sea fort was laid out in 1786, and it was thanks to Trekroner and its 66 cannons and 18 naval vessels that the British fleet in 1801 was not able to enter Copenhagen Harbour. Nowadays the island is open for visitors. A maritime buffet will be served in a unique, historical atmosphere. Coaches will start leaving *Falconer Center* at 18.00. *Boats to the island will leave from “Gammel Strand” in Copenhagen at 19.00 hrs.* Dress: smart casual.

Accompanying Persons Tours

City tour of Copenhagen, Tuesday, August 27

Participants are guided through the lovely Danish capital and its landmarks over land (by sightseeing bus) and by water. Visits include the crown jewels at Rosenborg Castle and the goblins at Christiansborg. Lunch in the city is included. *Coach will depart from the backside of Falconer Center at 9.00 hrs and return at ca 16.00 hrs.*

Tour of Northern Sealand, Thursday, August 29

A bus ride along the beautiful coastline takes you to the Louisiana art museum, the Kronborg castle known from Hamlet, as well as the castles of Fredensborg and Frederiksborg. Lunch will be in the historical harbour city of Elsinore (Helsingør). *Coach will depart from the backside of Falconer Center at 9.00 hrs and return at ca 15.00 hrs.*

9th EFI Annual Conference

Prior to the IUFRO conference, EFI will hold its 9th Annual Conference. This event is primarily aimed at present and potential EFI member organisations. A detailed agenda has been sent out to all EFI members. For more information about the EFI Annual Conference, please contact Ms. Anu Ruusila (anu.ruusila@efi.fi) or visit the EFI website at www.efi.fi

Organisers

IUFRO, International Union of Forest Research Organizations, (<http://iufro.boku.ac.at>) is a non-profit, non-governmental international network of forest scientists. IUFRO has over 700 member organisations in more than 100 countries. IUFRO's mission is to promote coordination and international cooperation in scientific studies embracing the whole field of research related to forests and trees. Its activities are organised primarily through its 285 IUFRO research units in 8 technical Divisions.

EFI, European Forest Institute, (www.efi.fi) is an independent, non-governmental organisation with over 130 member organisations in 35 countries. The institute has established itself as the leading forest research capacity at the European level.

Skov & Landskab, the Danish Centre for Forest, Landscape and Planning, is a mutually binding cooperation of the Danish Forest and Landscape Research Institute (www.fsl.dk), the Royal Veterinary and Agricultural University (www.kvl.dk) and the Danish Forestry College (www.sks.dk). The objective of the research centre is to generate and disseminate knowledge on forests, landscapes and planning. *Skov & Landskab* carries out research, education, and extension concerning these topics.

Scientific Organising Committee

Niels Elers Koch, *Skov & Landskab* and IUFRO-Board (chair)
Reinhard Hüttel, IUFRO Division 1
Zelimir Borzan, IUFRO Division 2
Dennis Dykstra, IUFRO Division 3
Klaus von Gadow, IUFRO Division 4
Howard Rosen, IUFRO Division 5
Cecil Konijnendijk, IUFRO Division 6 (conference coordinator)
Kazuo Suzuki, IUFRO Division 7
Alain Franc, IUFRO Division 8
Risto Päivinen, European Forest Institute
Kjell Nilsson, *Skov & Landskab*
Per Holten-Andersen, *Skov & Landskab*
Pelle Gemmel, The Swedish University of Agricultural Sciences

Sponsors

This conference has been made possible with the support of Carlsen-Langes Legatstiftelse; European Forest Institute (EFI); International Union of Forest Research Organizations (IUFRO); Nordic Forest Research Co-operation (SNS); NOVA-BOVA, the cooperation programme between Nordic and Baltic Veterinary and Agricultural Universities; *Skov & Landskab*; Swedish University of Agricultural Sciences (SLU-Alnarp); and others. *Scandinavian Airlines System (SAS)* is the official airline of the conference and has kindly offered all delegates special discounts and congress fares.

Programme

Monday, August 26, 2002

9th EFI annual conference

Royal Veterinary and Agricultural University

- 8.30** Registration (*Lobby*)
9.30 Session 1
11.00 Coffee (*Lobby*)
11.30 Session 2
13.00 Lunch (*Lobby*)
14.15 Session 3
15.30 Coffee (*Lobby*)
16.00-17.00 Session 4
- 18.30** EFI conference dinner
(*Danish Forest and Landscape Research Institute*)
ca 22.00 Return to Copenhagen

Tuesday, August 27, 2002

IUFRO conference

Radisson SAS Falconer Hotel & Conference Center

- 8.00** Registration (*Lobby*)
- 9.30** Opening session (*Falconer Scenen*)
Chairs: N. E. Koch (DK) and C. C. Konijnendijk (DK)
1. H. C. Schmidt, Danish Minister of the Environment
2. P. Holten-Andersen, Rector of the Royal Veterinary and Agricultural University
3. R. Seppälä, President of IUFRO
4. R. Päivinen, Director of EFI
5. N. E. Koch, Director General of Danish Forest and Landscape Research Institute
- 11.00** Coffee and posters (*Foyer, lobby*)
- 11.30** Plenary Session I
The development of urban forestry – a people-based approach (*Falconer Scenen*)
Chairs: K. von Gadow (GER) and B. J. Thorsen (DK)
1. R. Miller (USA) – Urban forestry: history and introduction
2. T. B. Randrup and C. C. Konijnendijk (DK) – Urban forestry in Europe: status and prospects
3. A. Palijon (PHI) – Urban forestry in Asia: state of the art
- 13.00** Lunch and posters (*Foyer, lobby*)
- 14.00** Plenary Session II
The environmental functions and benefits of forests and trees in urban societies (*Falconer Scenen*)
Chairs: R. Seppälä (FIN) and K. R. Rasmussen (DK)
1. T. Karjalainen et al. (FIN) – Forests and carbon

- sequestration: status and prospects
2. E. G. McPherson (USA) – Municipal forestry benefit-cost analysis: a comparison of Modesto and Santa Monica, California
3. S. Tjallingii (NL) – Sustainable and green: ECOPOLIS and urban planning

15.30 Coffee and posters (*Foyer, lobby*)

16.00-18.00 Parallel Sessions 1

- 6.14.00 (1a)** Urban forestry – advances in social and health aspects (*Falconer Scenen*)
6.18.00 Gender issues in forestry serving urbanised societies (1) (*Falconer 102*)
6.14.00 (2a) Urban forest resources and advances in ecological research (*Falconer 103*)
RECOGNITION Project meeting (*Falconer 202*)
1.05.00 Silviculture for sustainable multi-functional forests, Business meeting (*Falconer 203*)
6.03.00 Accessing information: how IUFRO can help you? A forum on new developments in the information world (1) (*Falconer 204*)

Evening Reception at Copenhagen City Hall & visit to Tivoli Gardens

17.45-18.15 Coaches leave from the backside of Falconer Center

18.50 Reception at Copenhagen City Hall

ca 21.00 Optional visit to Tivoli on own account
Return to hotel on own account

Wednesday, August 28, 2002

- 9.00** Plenary Session III (*Falconer Scenen*)
Socio-economic aspects of forests and trees in urban societies
Chairs: P. Paschalis (POL) and F. Rego (POR)
1. M. Krott (GER) – Task-oriented comprehensive urban forestry
2. C. Price (UK) – Quantifying social and economic benefits of urban forests: a review
3. H. Juslin (FIN) – Marketing of forest products serving urbanised societies
- 10.30** Coffee and posters (*Foyer, lobby*)
- 11.00** Plenary Session IV (*Falconer Scenen*)
Degraded land areas in urban societies and the need for innovative forest management
Chairs: H. Spiecker (GER) and M. Tomé (POR)
1. R. Hüttl (GER) – Ecology of disturbed landscapes: a case study from Germany
2. N. Jones (UK) – Urban forests for land

Programme

	regeneration: the UK example 3. K. von Gadow (GER) – Silvicultural management systems for urban forests
12.30	Lunch and posters (<i>Foyer, lobby</i>)
13.00	RECOGNITION – Press conference (<i>Falconer Scenen</i>) Chair: R. Päivinen (FIN)
14.00	Parallel Sessions 2 RECOGNITION (1) Causes and consequences of increased forest growth in Europe (<i>Falconer Scenen</i>) 6.14.00 (2b) Urban forestry – advances in urban forest management (<i>Falconer 102</i>) 6.14.00 (1b) Urban forestry – advances in policy and planning (<i>Falconer 103</i>) 6.03.02 Trends in forest terminology: urban forestry (<i>Falconer 202</i>) Division 5 Forest products use in urban areas, business meeting (<i>Falconer 203</i>) 6.18.00 Gender issues in forestry serving urbanised societies (2) (<i>Falconer 204</i>)
16.00	Coffee and posters (<i>Foyer, lobby</i>)
16.30-18.30	Parallel Sessions 3 RECOGNITION (2) Causes and consequences of increased forest growth in Europe (<i>Falconer Scenen</i>) 4.01.00 Mensuration and modelling in the context of urban forestry (<i>Falconer 102</i>) 6.14.00 (3) Urban forestry as a development tool (<i>Falconer 103</i>) 6.18.00 – Business meeting (<i>Falconer 203</i>) 6.03.00 Accessing information: how IUFRO can help you? A forum on new developments in the information world (2) (<i>Falconer 204</i>)
18.30	Launch of new journal (<i>Falconer Stuen</i>) Urban Forestry & Urban Greening
18.30-20.00	CONFOREST EFI RPC – Business meeting (<i>Falconer 102</i>) Chair: H. Spiecker (GER)
Evening	Free evening

Thursday, August 29, 2002

9.00	Plenary Session V (<i>Falconer Scenen</i>) Threats to forests and their sustainability in urban societies Chairs: J. B. Larsen (DK) and K. Nilsson (DK) 1. P. Paschalis (POL) – Sustainable forest management. problems, causes and concerns in changing societies of Europe
------	--

	2. E. Paoletti (ITA) et al. – Urban trees and air pollution 3. F. Rego and H. Martins (POR) – Forest fires in urbanised societies: status and management
10.30	Coffee and posters (<i>Foyer, lobby</i>)
11.00	Plenary Session VI (<i>Falconer Scenen</i>) Forests and trees in urbanised societies – the social agenda Chair: R. Miller (USA) 1. R. Kaplan (USA) – The social values of forests and trees in urbanised societies 2. S. de Vries (NL) – Health benefits of a more natural living environment 3. F. S. Jensen & N. E. Koch (DK) – 25 years of outdoor recreation research and its impacts on forest policy in Denmark
12.30	Lunch and posters (<i>Foyer, lobby</i>)
14.00	GFIS - IUFRO Global Forest Information Service (<i>Falconer Scenen</i>) Chair: N. E. Koch (DK) 1. H. Schmutzenhofer (IUFRO Executive Secretary) – Welcome address 2. R. Päivinen (coordinator of GFIS Task Force) – What is GFIS? 3. N. Bruun de Neergaard (GFIS Special Programme coordinator) – Development of GFIS 4. M. Kleine (IUFRO SPDC coordinator) – The use of GFIS in the global internet world 5. A. Schuck (EFI) – Data analysis tools: an example from Europe 6. Launching ceremony 7. H. Schmutzenhofer (IUFRO Executive Secretary) – The way ahead: conclusions and future of GFIS
16.00	Coffee (<i>Lobby, foyer</i>)
16.30-18.00	Closing Session (<i>Falconer Scenen</i>) Panel discussion on the Role of Research. Moderator: M. Krott (GER) Panel members: Y. Birot (COST), N. E. Koch (IUFRO & SNS), R. Päivinen (EFI), B. O. Hudson (ISA) Summary by conference chairpersons (N. E. Koch & C. C. Konijnendijk)
Evening	Conference dinner at “Sea Fort Trekroner”
18.00	Coaches leave from Falconer Center
19.00	Dinner at “Sea Fort Trekroner”
ca 22.30	Return to hotel by coach or on own account

Programme *continued*

Friday, August 30, 2002

Technical Excursions

- 8.15** The Danish Hardwood Industry
Coach leaves from the backside of Falconer Center
- 8.30** Greater Copenhagen and the Øresund Region
– An introduction to urban woodland areas in the region and visit to Alnarp Landscape Laboratory in Sweden
Coaches leave from the backside of Falconer Center
- ca 17.00** Return to Copenhagen

- urban forestry mensuration in Iran
- O. Makarova (RUS) and J. Koolen (NL) – Tree conditions and soil properties of Moscow sites
 - A. Bykov and J. Ric (CAN) – Forest pests as a public concern of Toronto's urban forest
 - M. Stockinger and M. Sieghardt (AT) – Application of biowaste compost in urban forests – chances and risks

RECOGNITION Project meeting (*Falconer 202*)

1.05.00 Silviculture for sustainable multifunctional forests, Business meeting (*Falconer 203*)

Chair: B. Hånell (SWE)

Introduction

Activities/meetings during the last five years

Current webpage presentation of Working Groups in WP 1.05.00

Future tasks, themes and activities of WP 1.05.00

IUFRO conference parallel sessions

August 27 / 16.00-18.00

Parallel Sessions 1

6.14.00 (1a) Urban forestry – advances in social and health aspects (*Falconer Scenen*)

Chairs: L. Tyrväinen (FIN) and C. C. Konijnendijk (DK)

- S. Kaplan (USA) – Some hidden benefits of the urban forest
- J. Galbraith and J. Westphal (USA) – The importance of garden areas in the health and well-being of Alzheimer's Dementia patients
- P. Grahn and U. Stigsdotter (SWE) – Landscape planning and stress
- B. Elands (NL) et al. – What do urbanised and rural societies expect from their forests?
- S. Guldager and T. A. Jensen (DK) – Children and the urban landscape
- S. Bell (UK) – Children, young people and urban fringe woodlands in Scotland

6.18.00 (1) Gender issues in forestry serving urbanised societies (*Falconer 102*)

Chair: T. E. Boon (DK)

- R. Spaeth (GER) – (Local) Agenda 21 – a key to gender and forestry?
- M. Nilsson (SWE) – Evaluation of the book “Kvinna och skogsägare” (“Woman and Forest Owner”)
- H. H. Oldrup (DK) – Gender and forestry: lessons from agriculture
- T. E. Boon and S. Anthon (DK) – Danish private forest owner values in a gender perspective

6.14.00 (2a) Urban forest resources and advances in ecological research (*Falconer 103*)

Chairs: E.G. McPherson (USA) and T.B. Randrup (DK)

- D. Nowak and J. Dwyer (USA) – Assessing national urban forest structure, functions, and value in the United States
- P. Panahi et al. (IRA) – The comparison of various methods in

6.03.00 (1) Accessing information: how IUFRO can help you? A forum on new developments in the information world (1)

(*Falconer 204*)

Chairs: R. A. Mills (UK) and C. Green (USA)

Panel discussion:

Accessing information: how IUFRO can help you?

Panel members: L. Gray (UK), A. Kempf (CH), G. Petrokofsky (UK) and A. Price (DK)

August 28 / 14.00-16.00

Parallel Sessions 2

RECOGNITION (1) Causes and consequences of increased forest growth in Europe (*Falconer Scenen*)

Chair: R. Päivinen (FIN)

- T. Karjalainen and A. Schuck (FIN) – Introduction to the RECOGNITION project
- K. Mellert et al. (GER) – Recent changes of the nutritional status of European forests
- J. Prietzel et al. (GER) – Relationships between recent changes of the growth of European Scots pine stands and of growth-influencing factors – Results of long-term studies
- H.-P. Kahle et al. (GER) – Spatial patterns and trends in forest growth, stand nutrition and climate – findings on the regional and European scale
- M. van Oijen (UK) et al. – Changes in growth of Scots pine and Norway spruce in Europe: an analysis using four process-based models

6.14.00 (2b) Urban forestry – advances in urban forest management (*Falconer 102*)

Chairs: T.B. Randrup (DK) and E.G. McPherson (USA)

- L. Tyrväinen et al. (FIN) – Can ecological and aesthetic values be combined in urban forest management?
- P. Tronde (SWE) – Concept for defining stands in urban forest management based on experiences
- P. Ackermann (RSA) and B. Talbot (DK) – Reverting urban exotic pine forests to Macchia vegetation using cable-yarders

Parallel sessions

on the slopes of Table Mountain, South Africa

4. W. Smith et al. (USA) – Fire in the wildland-urban interface in the USA South
5. J. Montag et al. (USA) – The urbanisation of wildlife management
6. S. Alinat et al. (FRA) – Two approaches for the study of a peri-urban landscape: graphic modelling and realistic computer visualisation

6.14.00 (1b) Urban forestry – advances in policy and planning (Falconer 103)

Chairs: A. Simson (UK) and G. Jørgensen (DK)

1. F. Salbitano (ITA) et al. – NeighbourWoods: good practice in urban woodland planning and design
2. U. Schraml (GER) – People's expectations toward forest management – the role of interpersonal networks with forest owners in rural and urban areas in Germany
3. L. M. Madsen (DK) – Private land owners as creators of new woodlands in Denmark: the role of production versus nature in the location process
4. J. Banks and C. Brack (AUS) – Canberra's urban forest: planning for future landscapes
5. J. Donis (LAT) – Proposal for the delineation of the greenbelt around Riga
6. M. Toniolo and M. Merlo (ITA) – A new forest in Venice: the joint implementation of policy tools based on financial incentives and property rights on private land

6.03.02 Trends in forest terminology: urban forestry (Falconer 202)

Chairs: M. Kaennel Dobbertin (CH) and R. Prüller (AT)

1. M. Kaennel Dobbertin (CH) et al. – Urban forestry: comparison of concepts in use in the developed and developing world
2. G. Petrokofsky (UK) – Collaborative ways of developing a multilingual forestry thesaurus
3. D. Schoene (ITA/FAO) – Harmonising forest-related definitions for use by various stakeholders

Division 5 Forest products use in urban areas, business meeting (Falconer 203)

Chair: H. Rosen (USA)

1. P. Araman et al. (USA) - Urban wood pallet recovery, repair and recycling in the US - profitable businesses provide needed products, and community services while saving trees for future use

6.18.00 (2) Gender issues in forestry serving urbanised societies (Falconer 204)

Chair: S. Lewark (GER)

1. S. Lewark (GER) – Gender studies – a new subject in forestry curricula
2. Open discussion: ways and examples of implementing gender issues into forestry curricula (moderated by S. Lewark and M. Karmann (GER))

August 28 / 16.30-18.30

Parallel Sessions 3

RECOGNITION (2) Causes and consequences of increased forest growth in Europe (Falconer Scenen)

Chair: R. Päivinen (FIN)

1. H. Spiecker (GER) et al. – Driving factors of forest growth changes in Europe – results of an interdisciplinary research cooperation
2. S. Kellomäki et al. (FIN) – Implications and consequences
3. Comments and discussion

4.01.00 Mensuration and modelling in the context of urban forestry (Falconer 102)

Chair: J.-P. Skovsgaard (DK)

1. D. Nowak et al. (USA) – New tools and technologies for assessing local urban forest structure, functions and value
2. M. Tomé et al. (POR) – Estimation of carbon budget in eucalyptus plantations in Portugal
3. D. Auclair et al. (FRA) – Four-dimensional botanically-correct virtual trees for urban architecture projects
4. M. Hernández et al. (SPA) – The application of GIS to the management of parks

6.14.00 (3) Urban forestry as a development tool (Falconer 103)

Chairs: A. Palijon (PHI) and

J. Dragsted (DK)

1. A. Simson (UK) – Successful urban forestry in the city centre – is it all about image?
2. P. Spathelf and L. Nutto (GER) – Urban forestry in Curitiba – a model for Latin American cities?
3. M. Mukolwe (KEN) – The status and prospects of urban forestry in Kenya
4. Y.-C. Youn and C. H. Lee (KOR) – School forests as a tool for urban greening in Korea – with specific reference to Seoul
5. K. Nilsson et al. (DK) – Urban greening in St Petersburg – results from an environmental aid project
6. P. Mitchell-Banks (CAN) – The various roles of community forests in British Columbia, Canada

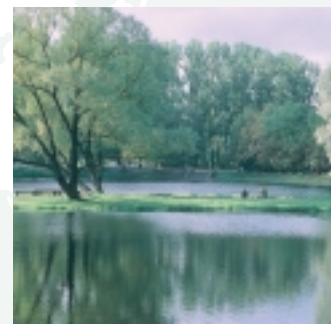
6.18.00 – Business meeting (Falconer 203)

Chair: A.-M. Furuberg (NOR)

6.03.00 (2) Accessing information: how IUFRO can help you? A forum on new developments in the information world (2) (Falconer 204)

Chairs: R. Mills (UK) and C. Green (USA)

1. A. Kempf (CH) – Identifying urban forestry research information by web-based citation patterns
2. Panel discussion: accessing information: how IUFRO can help you? Panel members: A. Kempf (CH), G. Petrokofsky (UK)



General Information

Language

The official language of the conference is English.
No interpretation will be provided.

Venues

The conference venue will be

The Radisson SAS Falconer Center
Falkoner Alle 9
DK-2000 Frederiksberg
Tel. +45 38158001
Fax +45 38158002
http://www.radisson.com/copenhagendk_falconer

The EFI Annual Conference on Monday, August 26, will be held at

The Royal Veterinary and Agricultural University
Thorvaldsenvej 40
DK-1871 Frederiksberg
<http://www.adm.kvl.dk/english/index.htm>

Final Registration/Hospitality desk – opening hours

Monday, August 26 (EFI Conference)	08.00-16.00 hrs
Tuesday, August 27	08.00-16.00 hrs
Wednesday, August 28	08.00-16.00 hrs
Thursday, August 29	08.00-16.00 hrs

Contact Conference Organisers

Organisational and practical matters

IUFRO 2002, c/o DIS Congress Service Copenhagen A/S
Herlev Ringvej 2C
DK-2730 Herlev, Denmark
Tel. +45 4492 4492
Fax +45 4492 5050
E-mail iufro@discongress.com

Questions about the scientific programme, presentations and abstracts

IUFRO-EFI 2002, Dr Cecil C. Konijnendijk,
Skov & Landskab
Danish Forest and Landscape Research Institute
Hoersholm Kongevej 11
DK-2970 Hoersholm, Denmark
Tel. +45 45763200
Fax +45 45763233
E-mail cck@fsl.dk

For urgent matters or emergencies during the conference contact DIS Congress Service or

E-mail iufro2002@mail.dk
Tel. +45 20102889 (emergencies only)

Dear participant
Welcome to Denmark – ever asked
a Dane what "hygge" means...?
www.scandinavian.net

SAS

A STAR ALLIANCE MEMBER 