

Livelihoods and integrated planning for FLR

Isabel Gutiérrez-Montes, CATIE Costa Rica

International Conference on Forest Landscape Restoration under Global Change
A CONTRIBUTION TO THE IMPLEMENTATION OF THE BONN CHALLENGE
"Synthesising and sharing globally available forest-related scientific knowledge"

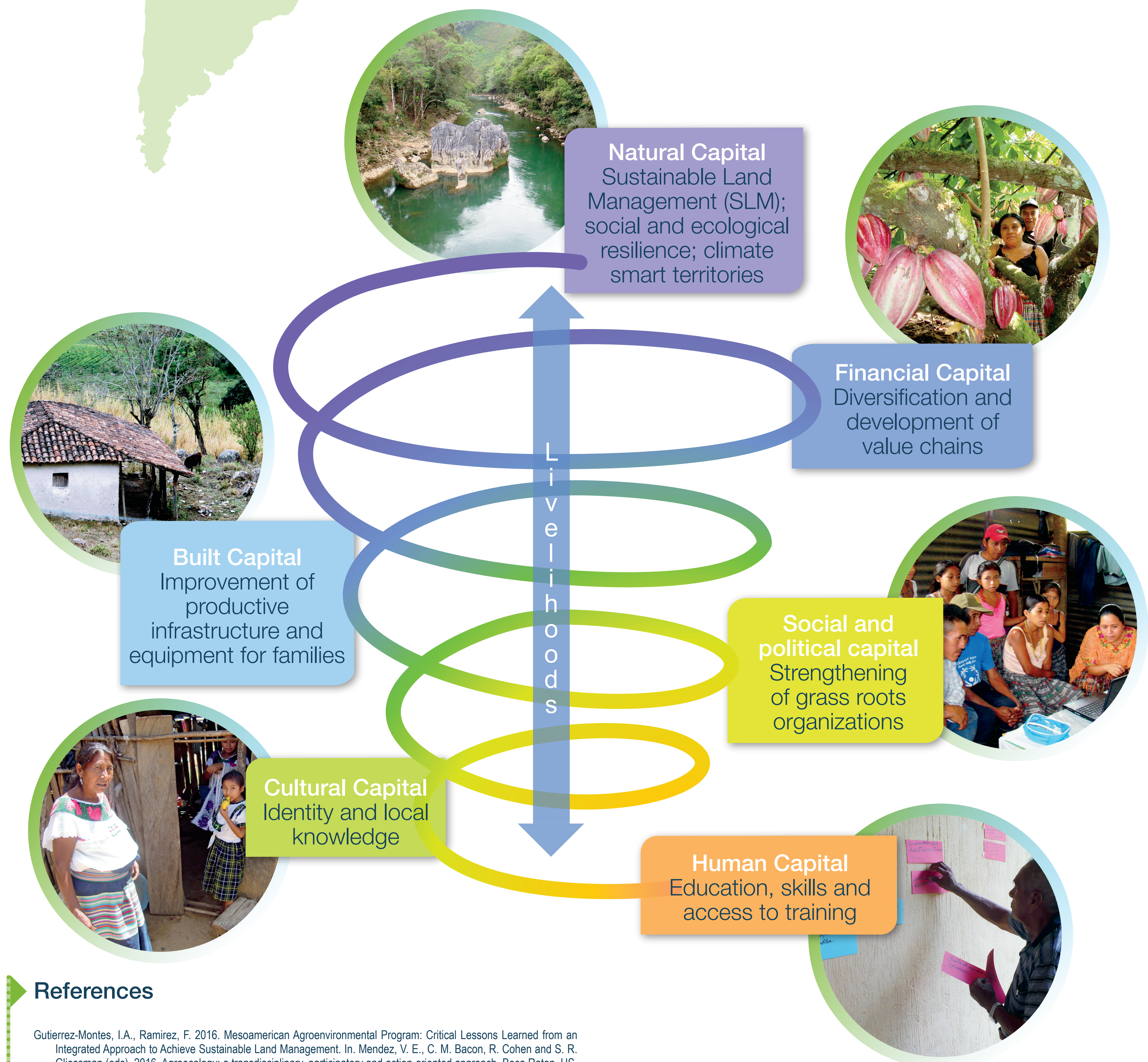
San Juan, Puerto Rico, 6-9 June 2017

Introduction

In Latin America rural communities depend directly on local natural resources to maintain livelihoods. Sustainable Livelihoods Approach (SLA) sees livelihoods as encompassing: the resources/ assets/community capitals, capacities and activities needed to live. Evolution of the SLA broadened the focus to include ways in which communities construct everyday activities to diversify sources of income and asset (community capitals) development to support families over time.

Livelihoods and integrated planning for FLR

Using the Community Capitals Framework (CCF) to help community members see their region as a system with assets and the integrated planning approach to focus on key decision points, leads to an inclusive and successful planning process with high potential for a forest landscape restoration. The use of the CCF consider the different resources rural communities (in general) and families (in particular) possess, pointing out that although financial capital is important, decision to keep/ include trees within the landscape is more related with human, social and cultural capital.



References

- Gutiérrez-Montes, I.A., Ramirez, F. 2016. Mesoamerican Agroenvironmental Program: Critical Lessons Learned from an Integrated Approach to Achieve Sustainable Land Management. In: Mendez, V.E., C. M. Bacon, R. Cohen and S. R. Gliessman (eds). 2016. Agroecology: a transdisciplinary, participatory and action-oriented approach. Boca Raton, US, Taylor and Francis Group, CRC Press. Pp. 217- 232.
- Gutiérrez-Montes, I., J. Siles. 2011. Achieving Sustainable Land Use in Rural Mesoamerica: Mesoamerican Agroenvironmental Program (MAP). Joint Newsletter: IACD and CDS. VII: 5.
- Gutiérrez-Montes, I., Emery, M. and Fernandez-Baca, E. 2009. Guest Editors Introduction: The Sustainable Livelihoods Approach and the Community Capitals Framework: The Importance of System-level Approaches to Community Change Efforts. Community Development, 40 (2): 106- 113.
- Gutiérrez-Montes, I., J. Siles, P. Bartol and A. Imbach. 2009. Merging a landscape management planning approach with the community capitals framework: empowering local groups in land management processes in Bocas del Toro, Panama. Community Development, 40 (2): 220-230.
- Louman, B., I. Gutiérrez, J. Le Coq, C. Brenes, JD Wulffhorst, F. Casanoves, M. Yglesias y S.Rios 2016. Avances en la comprensión de la transición forestal en fincas costarricenses. Revista Iberoamericana de Economía Ecológica, Vol. 26: 191-206.
- Louman, B.; Gutiérrez-Montes, I.; Le Coq, J.F.; Wulffhorst, J.D.; Yglesias, M. y Brenes, C. 2016. El enfoque de medios de vida combinado con la indagación apreciativa para analizar la dinámica de la cobertura arbórea en fincas privadas: el caso de Costa Rica. CIENCIA Ergo Sum, 23 (1): 58- 66.