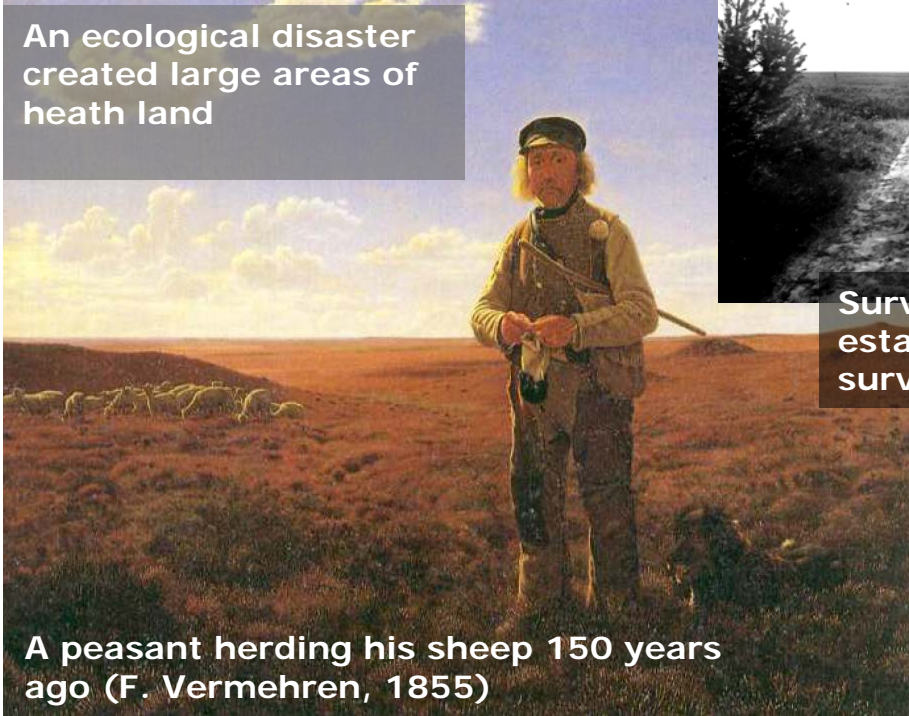


200 years of FLR in Denmark

A land-use story of losses and gains for forest land in the NW European lowland – and a story of

An ecological disaster created large areas of heath land



A peasant herding his sheep 150 years ago (F. Vermehren, 1855)



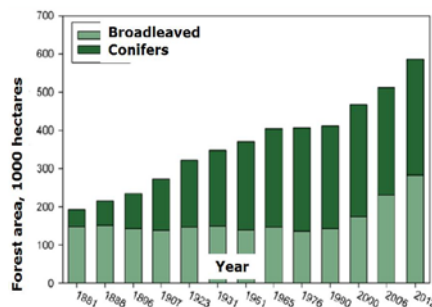
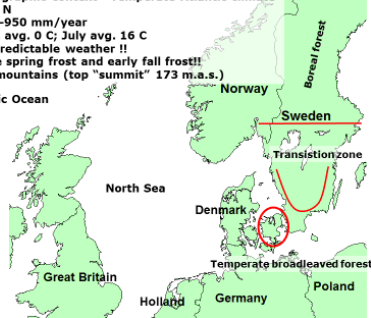
Survival and growth were low – here 40 years after establishment – and only non-native conifers could survive the conditions



Biogeographic context - Temperate Atlantic climate

- 55° N
- 700-950 mm/year
- Jan. avg. 0 C; July avg. 16 C
- Unpredictable weather !!
- Late spring frost and early fall frost!!
- no mountains (top "summit" 173 m.a.s.)

Atlantic Ocean



Now the non-native species support continuous cover systems and re-introduction of native broadleaves

