

Initiative 20x20

Initiative 20x20: A country-led effort to change the dynamics of land degradation in Latin America and the Caribbean

Rene Zamora-Cristales, PhD | June 6-9, 2017 | San Juan, Puerto Rico



Puntos de discusión



Why Landscape Restoration in Latin America?



Initiative 20x20: The evolution of a country-led movement



The importance of governance: the case of public and private finance



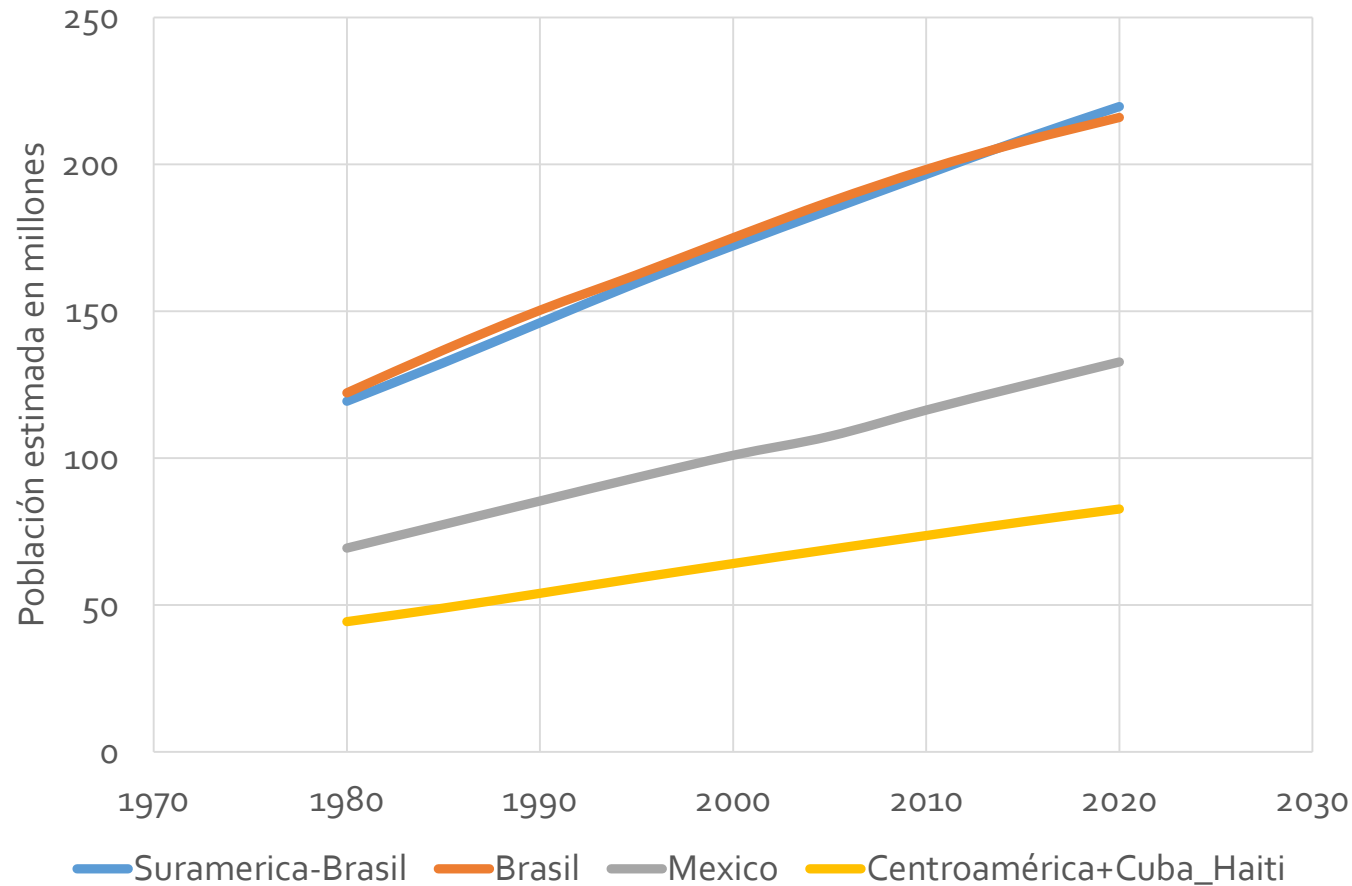
How countries are moving from political commitment to implementation

Poverty and Human Development



<http://worldmap.canadiangeographic.ca/>

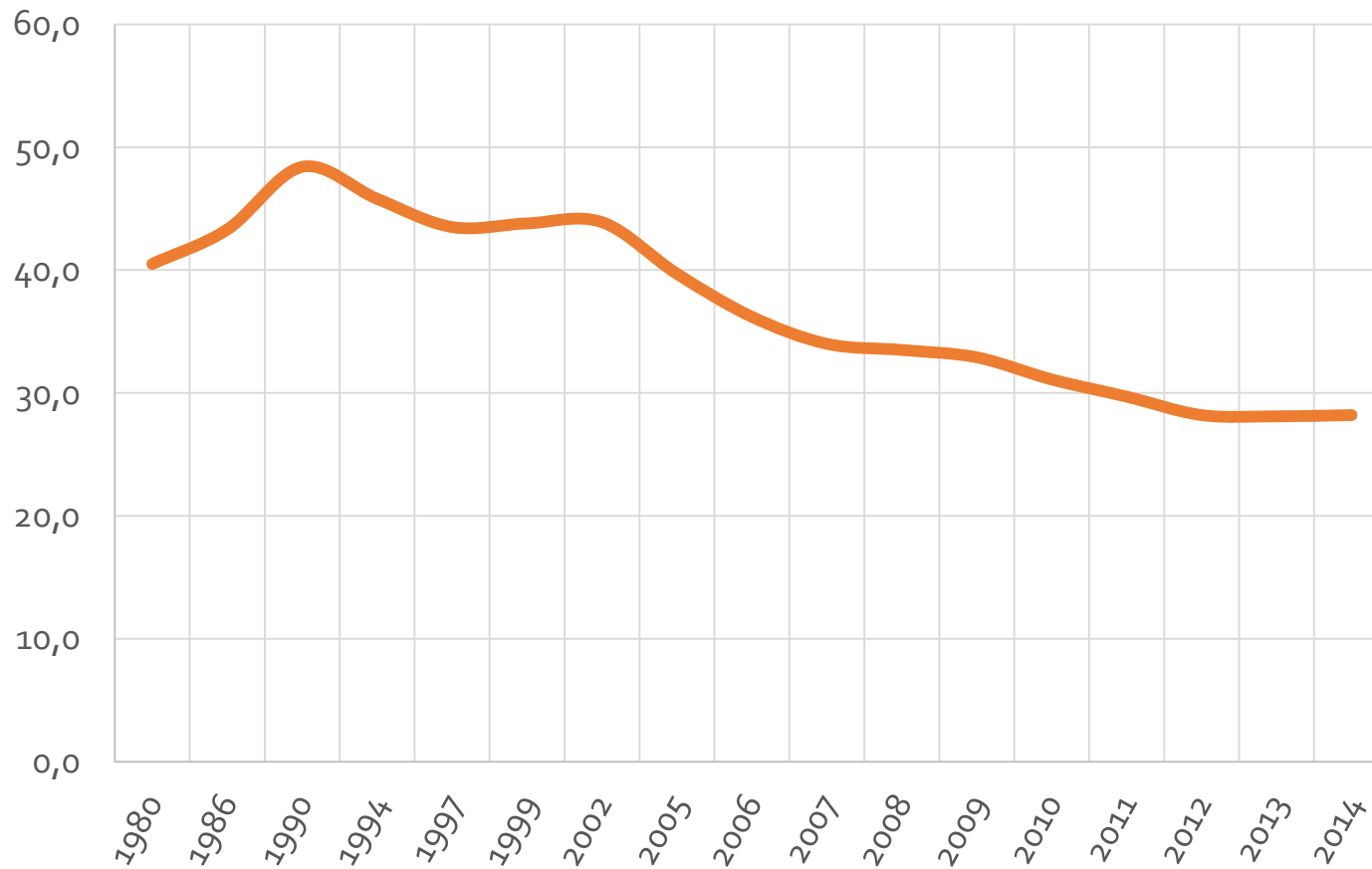
Population in Latin America



CEPAL, 2016

634.3 M

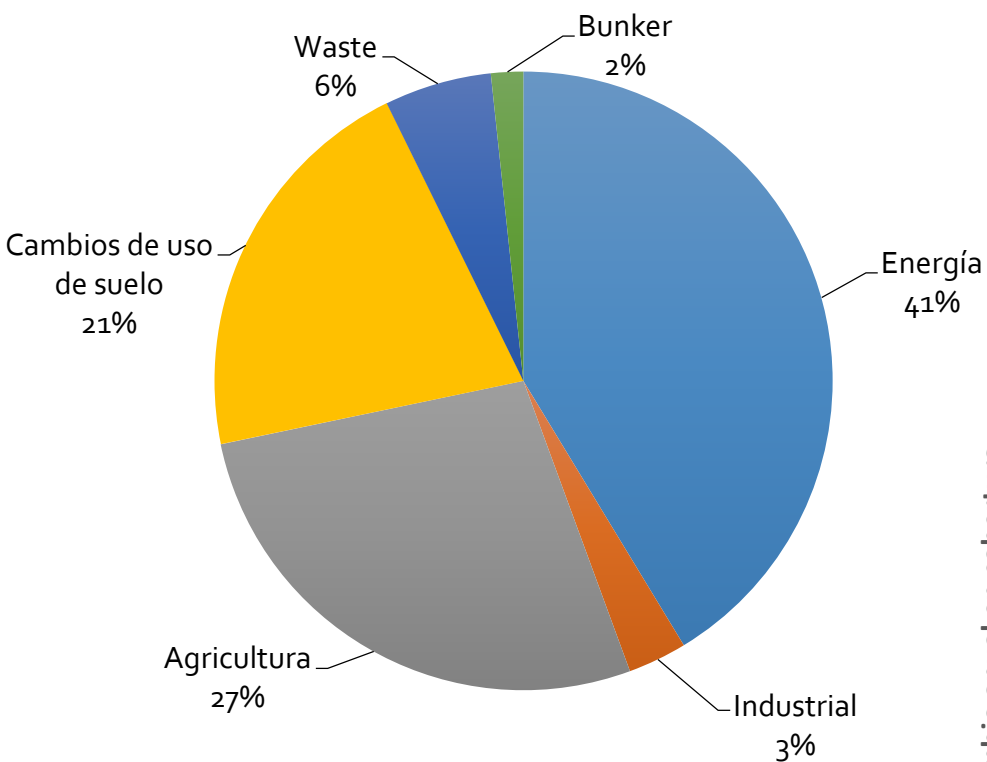
Poverty in Latin America



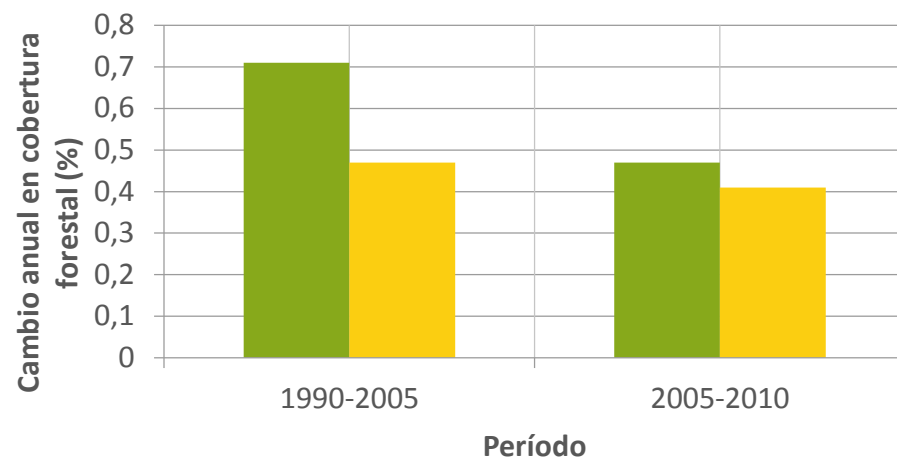
CEPAL, 2016

29.2%

Cambio Climático: Adaptación, Mitigación



<http://cait2.wri.org>



■ Mesoamerica ■ South America

Sources: Pacheco et al, 2010, *Landscape Transformation in Tropical Latin America: Assessing Trends and Policy Implications for REDD++*



GLOBAL EFFORTS

Bonn Challenge

150M

Hectares under restoration by
2020

New York declaration on forests

350M

Hectares under restoration by
2030

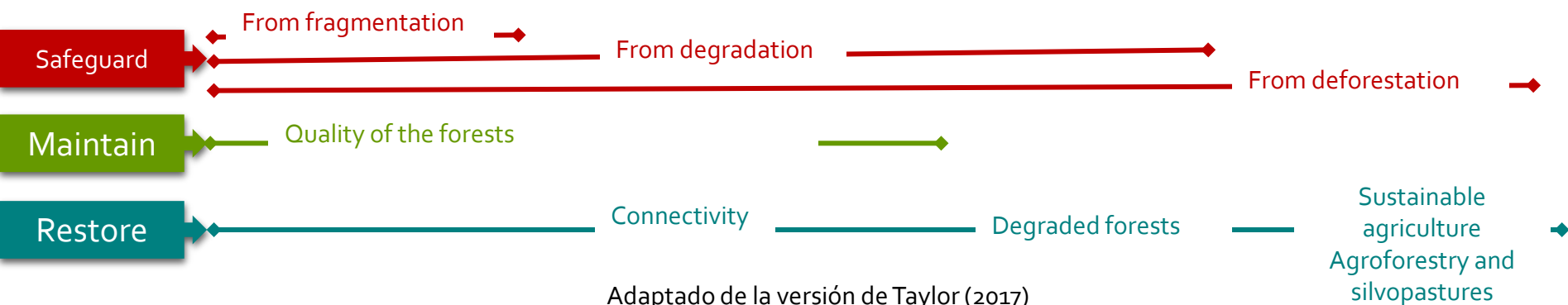
20X20

20 M hectares under
restoration by 2020

AFR 100

100 M hectares under
restoration by 2030

Landscape Restoration: the role of the forests



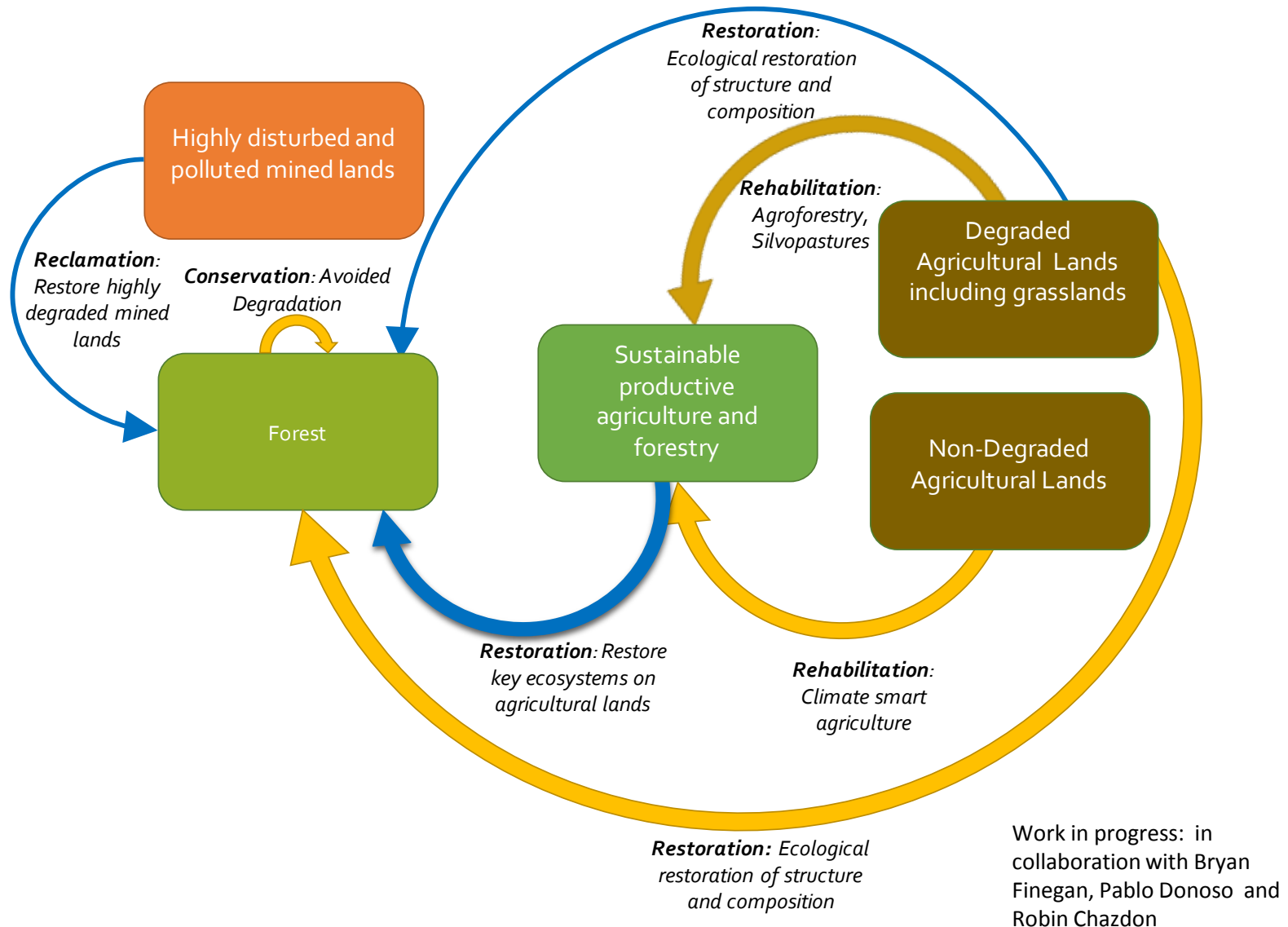
Adaptado de la versión de Taylor (2017)

Agriculture:

Improve agricultural practices to rehabilitate functionality of the land and restore ecosystem services to improve social wellbeing, and improve livelihoods.

Photo: WRI, Flickr

Landscape restoration



Compromisos de los países a la iniciativa 20x20



Initiative 20x20: A support platform for national restoration programs

Technical Partners



New York
Declaration on
Forests

Financial Partners



Initiative 20x20

Argentina
Belize
Brazil
Chile
Colombia
Costa Rica
Ecuador

El Salvador
Guatemala
Honduras
Mexico
Nicaragua
Panama

Paraguay
(Itaipu authority)
Peru
Regional programs: ABC,
Bosques Modelo,
Conservación Patagónica



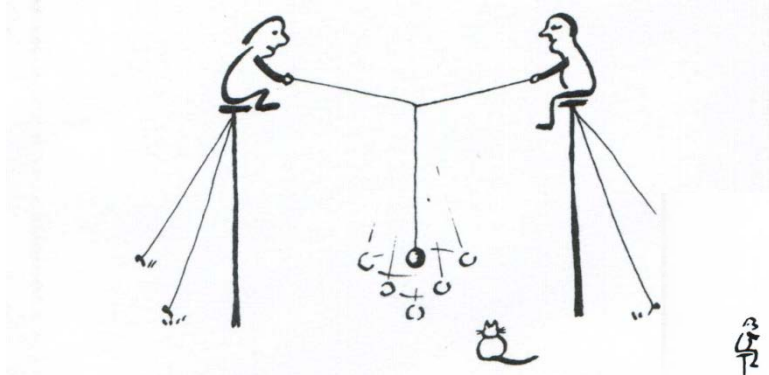
Member countries and regional programs

FACTORS OF SUCCESS

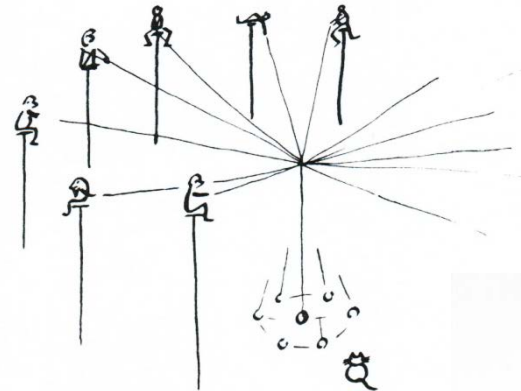
- Initiative is driven by countries; they design the agenda and activities.
- Technical partners provide target support: Coordination among technical partners is improved by the 20x20 platform.
- Emphasis not only on forests
- Key driver for cooperation is the learning potential from other countries in the region.
- Private capital sees rationale for investment but is also motivated by environmental concerns.
- Technical partners see benefits from aligning activities with government and private needs.

CHALLENGES: GOVERNANCE AND DECISION-MAKING

Our Institutions: Government, NGO's , Private companies

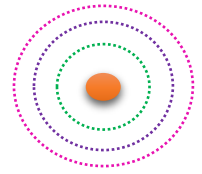
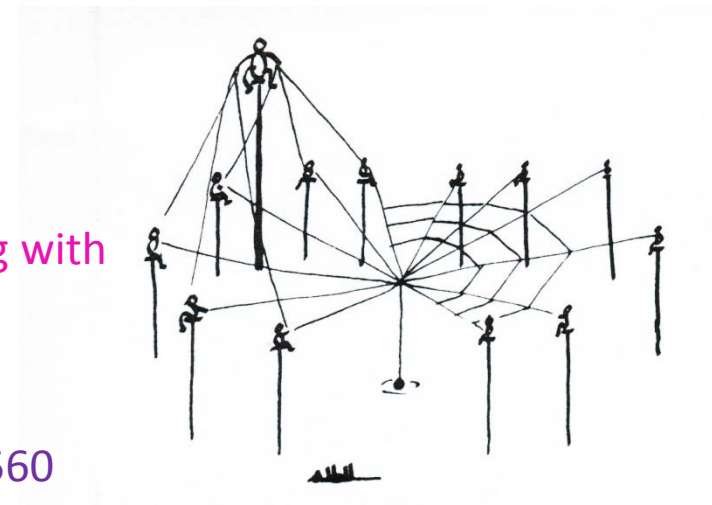


Performance:
Time to reach stability



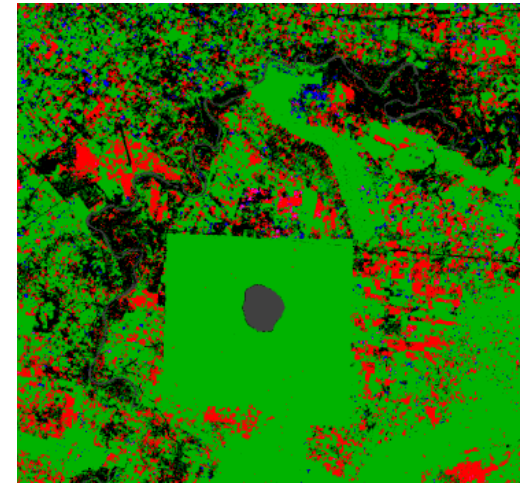
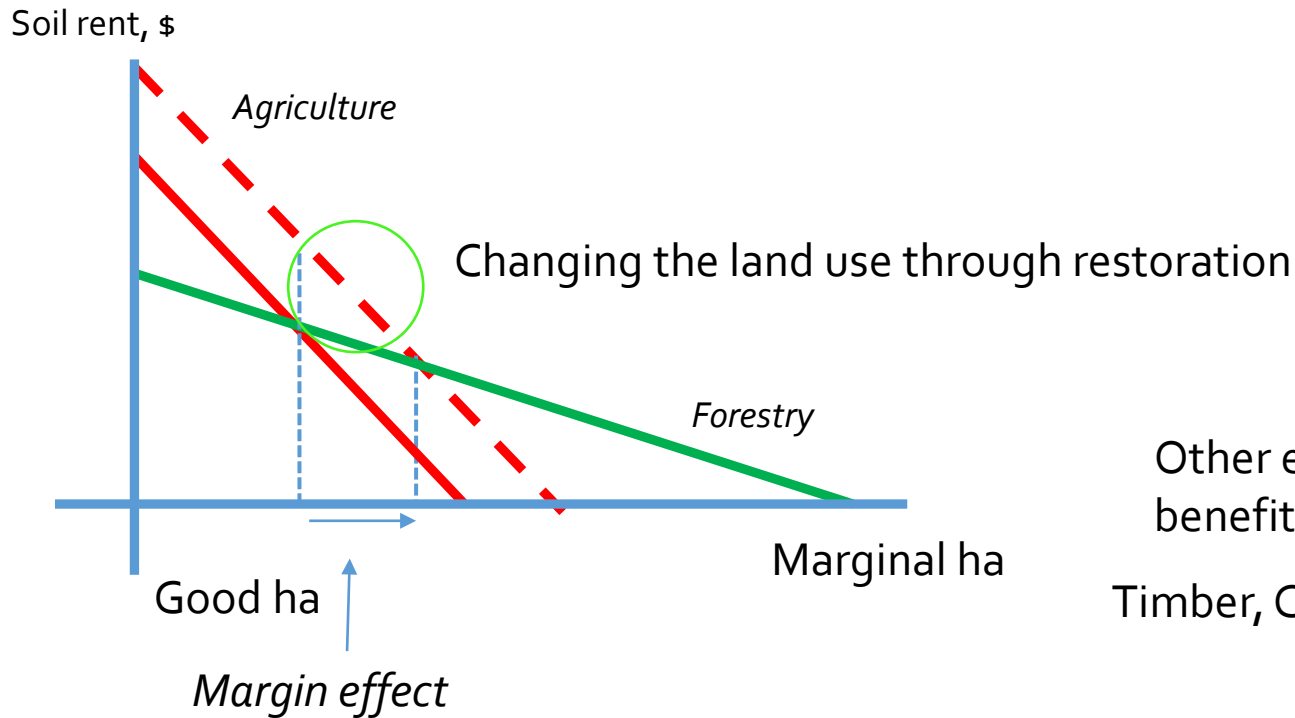
Complete Freedom:
Everyone is communicating with
everyone else = $n(n-1)$
communication channels

If $n=40$ the $n(n-1) = 40 \times 39 = 1560$

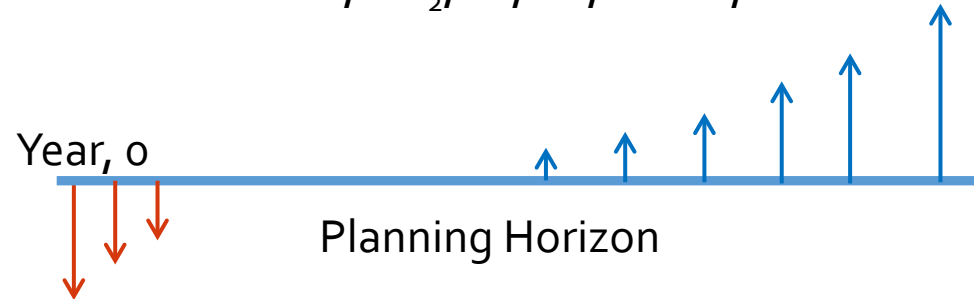


Source: Designing Freedom, Stafford Beer, 1973

CHALLENGES: PUBLIC INCENTIVES/SOIL RENT

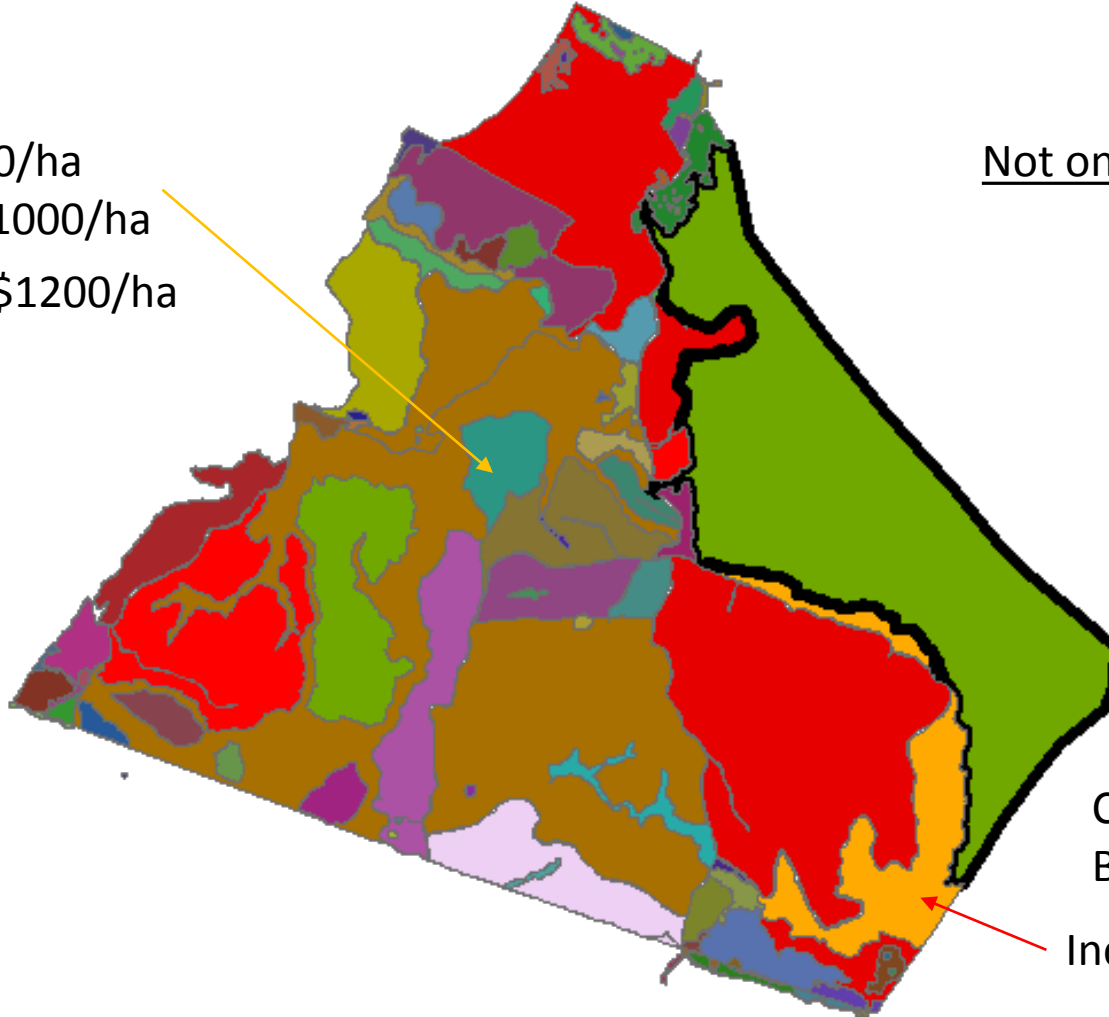


Other environmental and social benefits (Co-benefits)
Timber, CO₂, FP, ES, NWFP, Soil carbon

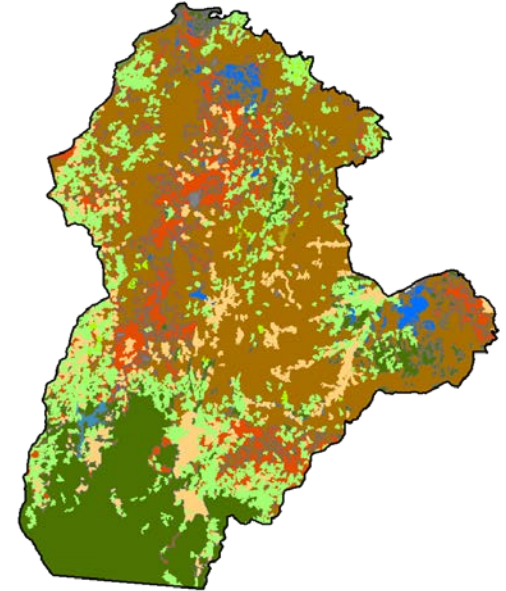


RESOURCE ALLOCATION OF PUBLIC INCENTIVES IN RESTORATION

Cost: \$500/ha
Benefit: \$1000/ha
Incentive: \$1200/ha



Not only market values



Cost: \$500/ha
Benefit: \$1000/ha
Incentive \$1200/ha

PRIVATE INVESTMENT: BARRIERS

Key factors to scale private investments in restoration at scale



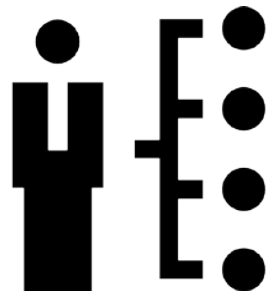
1. Capital



2. Markets



3. Policies



4. Capacities



5. Research

Faruqi and Wu (2017)

RESTORATION VALUE CHAINS: THE NEXUS BETWEEN FOREST LEGALITY AND RESTORATION

Value chains: Processing and transportation

Sustainable products from the restoration

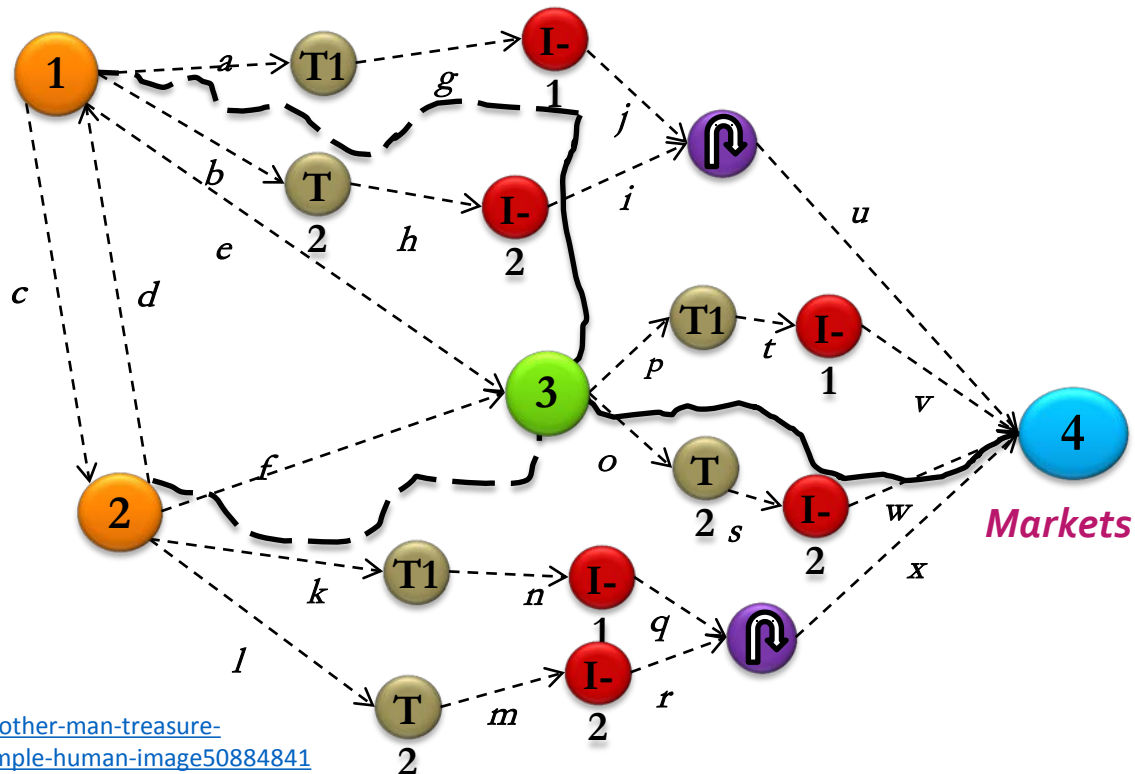
Sustainable native species seed supply



Products



<http://www.dreamstime.com/stock-illustration-one-man-trash-another-man-treasure-motivational-inspirational-poster-representing-proverb-sayings-simple-human-image50884841>



FROM POLITICAL COMMITMENT TO IMPLEMENTATION



National plans
and strategies



Capacitación 2017



Curso internacional **La restauración de paisajes** Principios y herramientas inclusivas para liderar la transformación

Del 8 al 19 de mayo de 2017



Bringing 20 million
hectares of degraded land in
Latin America & the Caribbean
into restoration by 2020

Supported by



Federal Ministry for the
Environment, Nature Conservation,
Building and Nuclear Safety



WORLD
RESOURCES
INSTITUTE

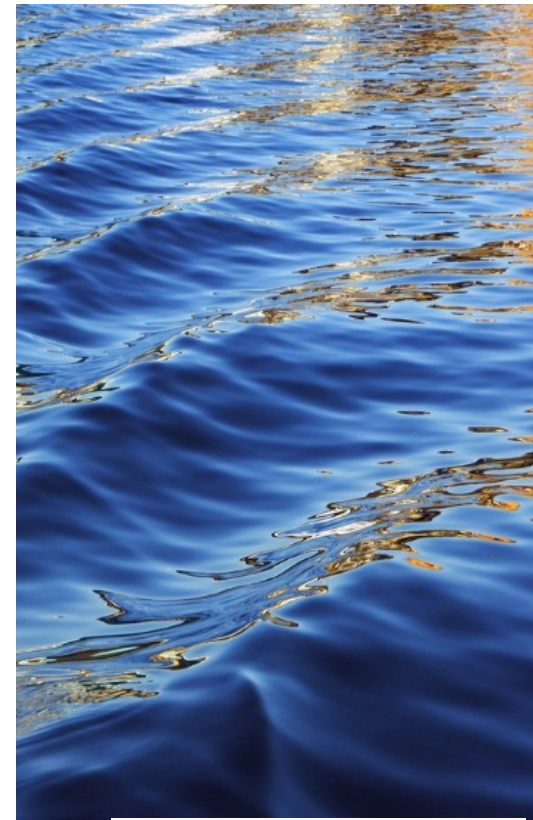
Dr. René Zamora-Cristales, WRI, rene.zamora@wri.org,

Latin America Research Coordinator, Initiative 20x20, World Resources Institute

Deputy Coordinator IUFRO Division 3.01, Road Networks and Transportation

Courtesy Faculty, College of Forestry, Oregon State University, rene.zamora@oregonstate.edu

Initiative
20x20



WORLD
RESOURCES
INSTITUTE

Supported by:



Federal Ministry for the
Environment, Nature Conservation,
Building and Nuclear Safety

based on a decision of the German Bundestag