

Landscape Governance Capacity Framework

framework for assessment and strategic guidance of governance at landscape level

International Conference on Forest Landscape Restoration under Global Change

June 7th 2017

Ilse Hennemann, Wageningen Centre for Development Innovation



Wageningen University & Research



WAGENINGEN UR
For quality of life

Wageningen Centre for Development Innovation (CDI)



Research



Education



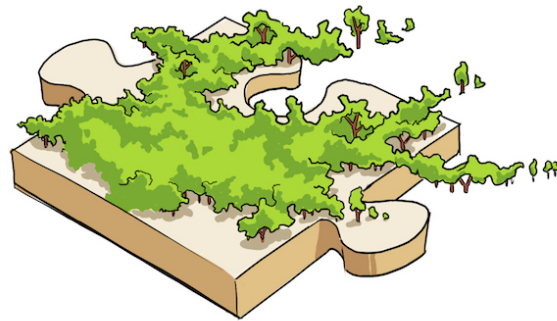
Value creation

Why do we work on landscapes?

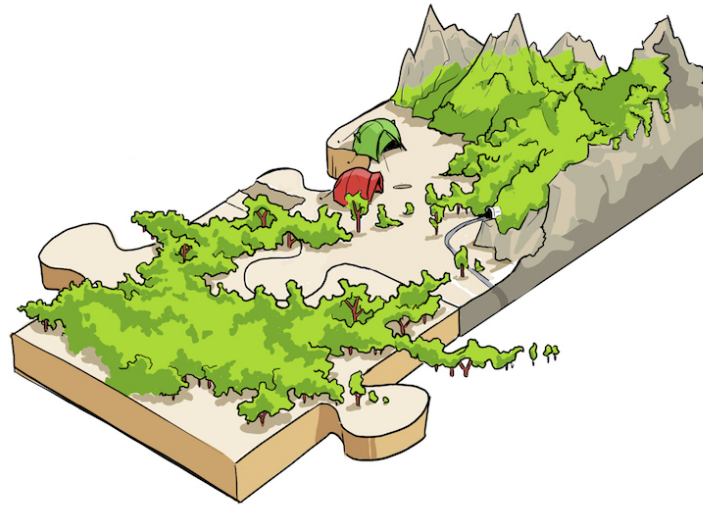
- Complexity and interrelation of current global problems
- Prevention of working in sectoral silo's
- It connects products to place
- Engagement from business sector
- Sustainable development goals



The landscape



The landscape



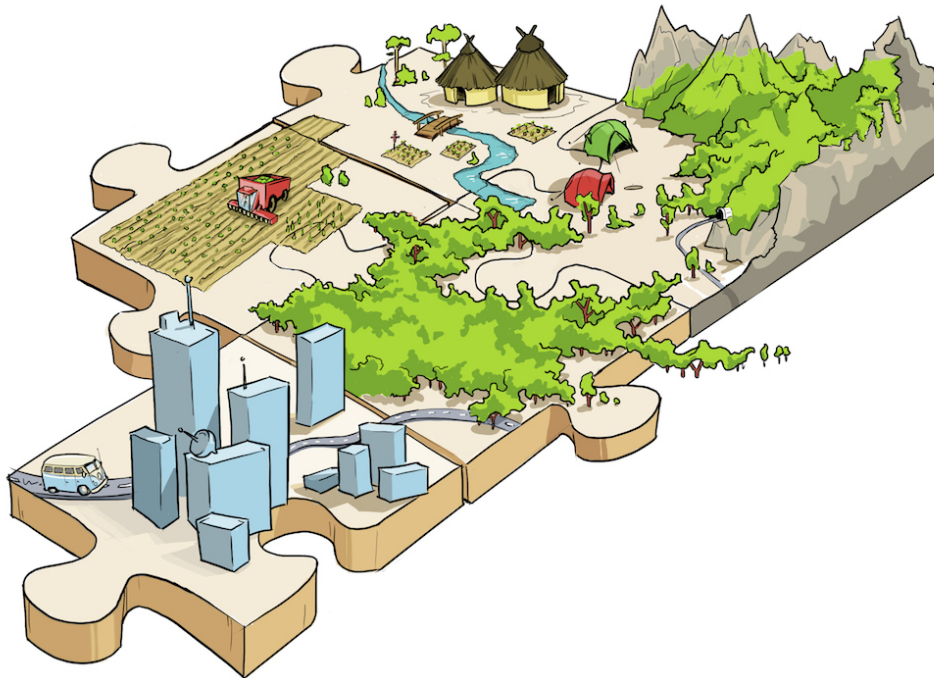
The landscape



The landscape



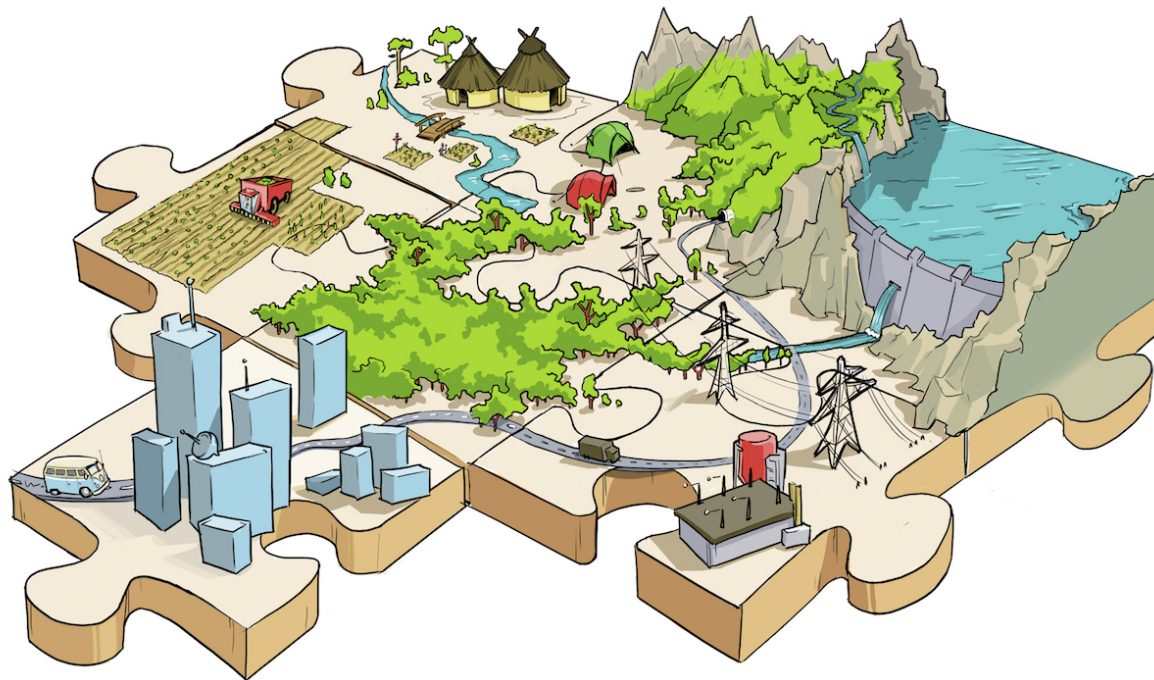
The landscape



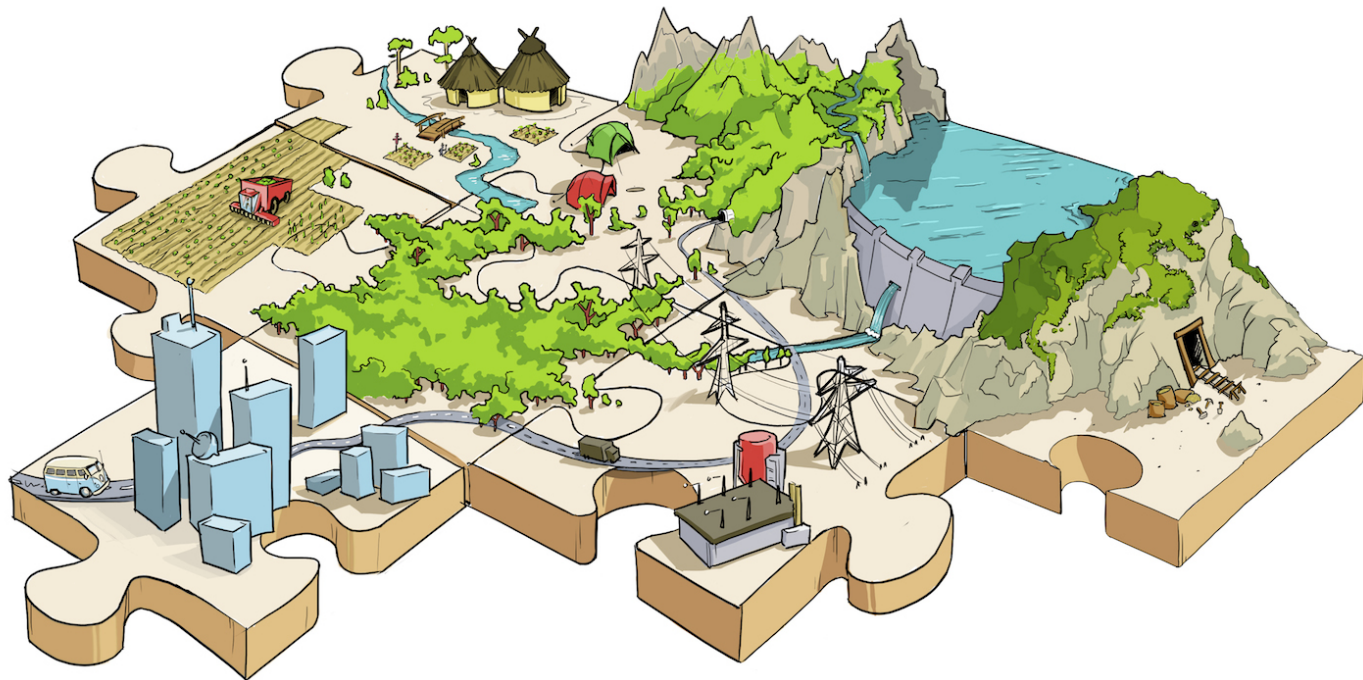
The landscape



The landscape



The landscape



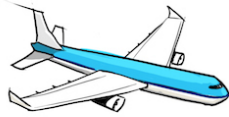
The landscape



The landscape



The landscape

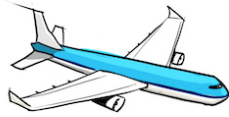


BONN
CHALLENGE



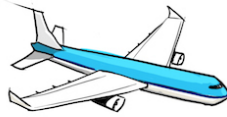
WAGENINGEN
UNIVERSITY & RESEARCH

The landscape

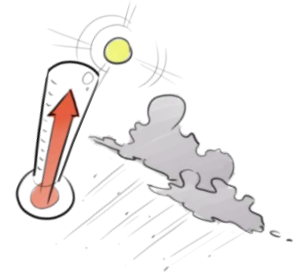
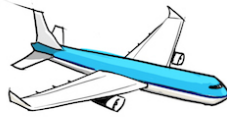


WAGENINGEN
UNIVERSITY & RESEARCH

The landscape



The landscape



Landscape governance



Landscape governance



Landscape governance



Landscape governance



Landscape governance



Landscape governance defined



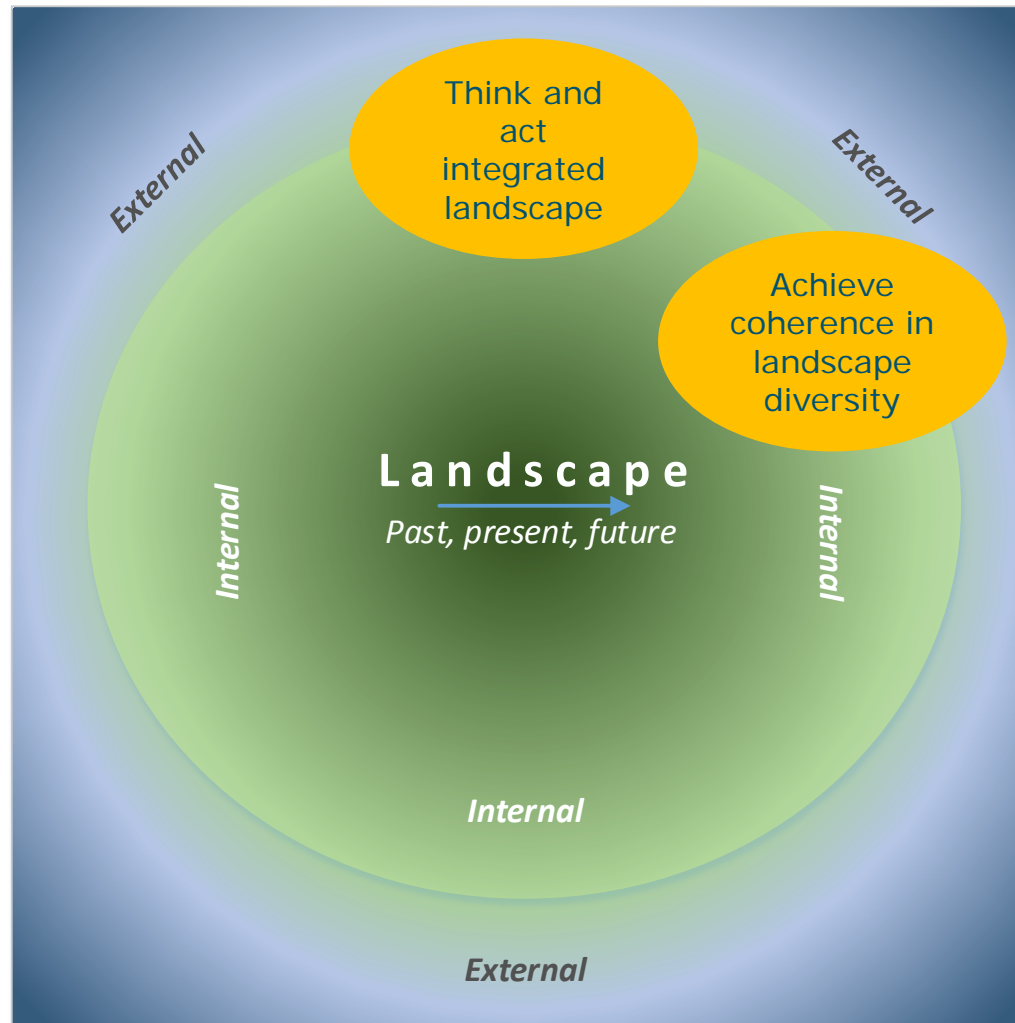
- Multiple landscape services & functions
- Multiple stakeholders, conflicting interests
- Power imbalances
- Networks across political-administrative and sectoral boundaries
- Creation of new institutional arrangements
- All embedded in a unique “place”

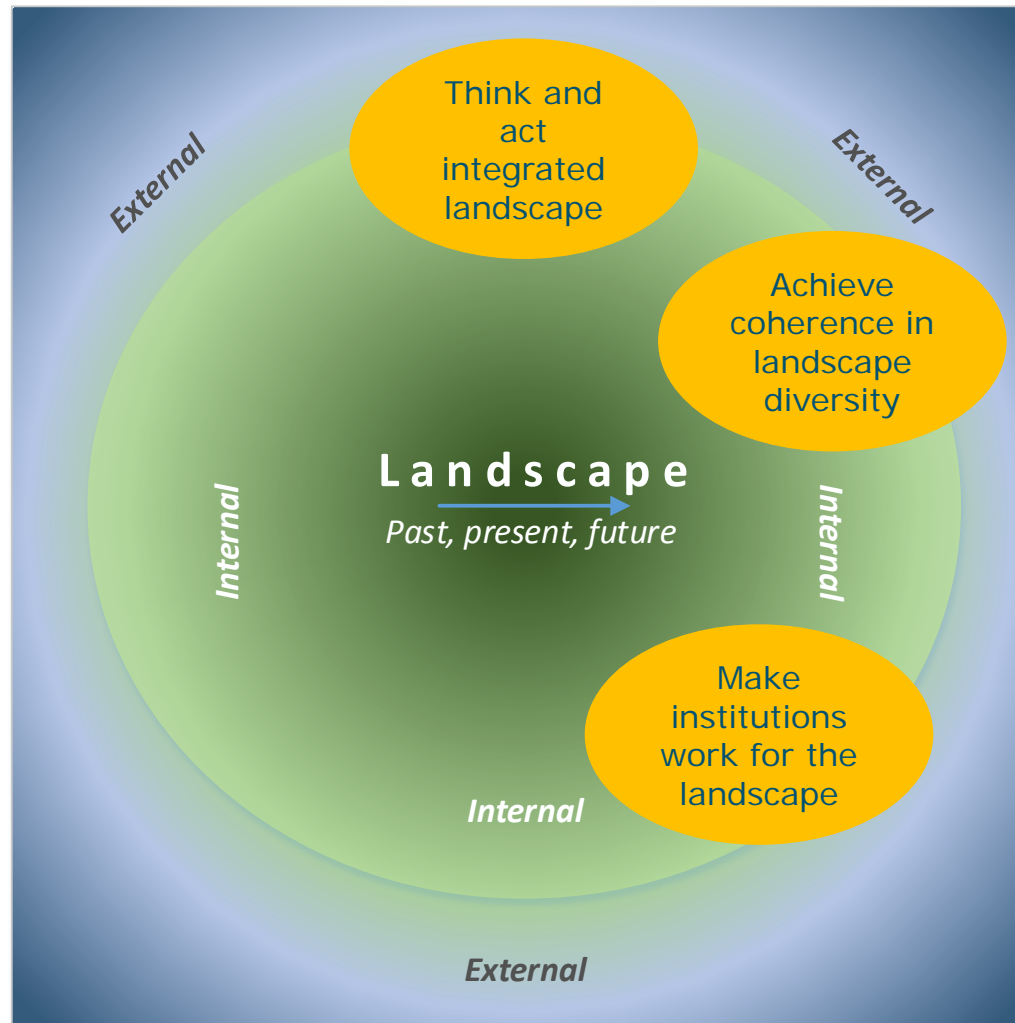
Landscape governance requires new capacities

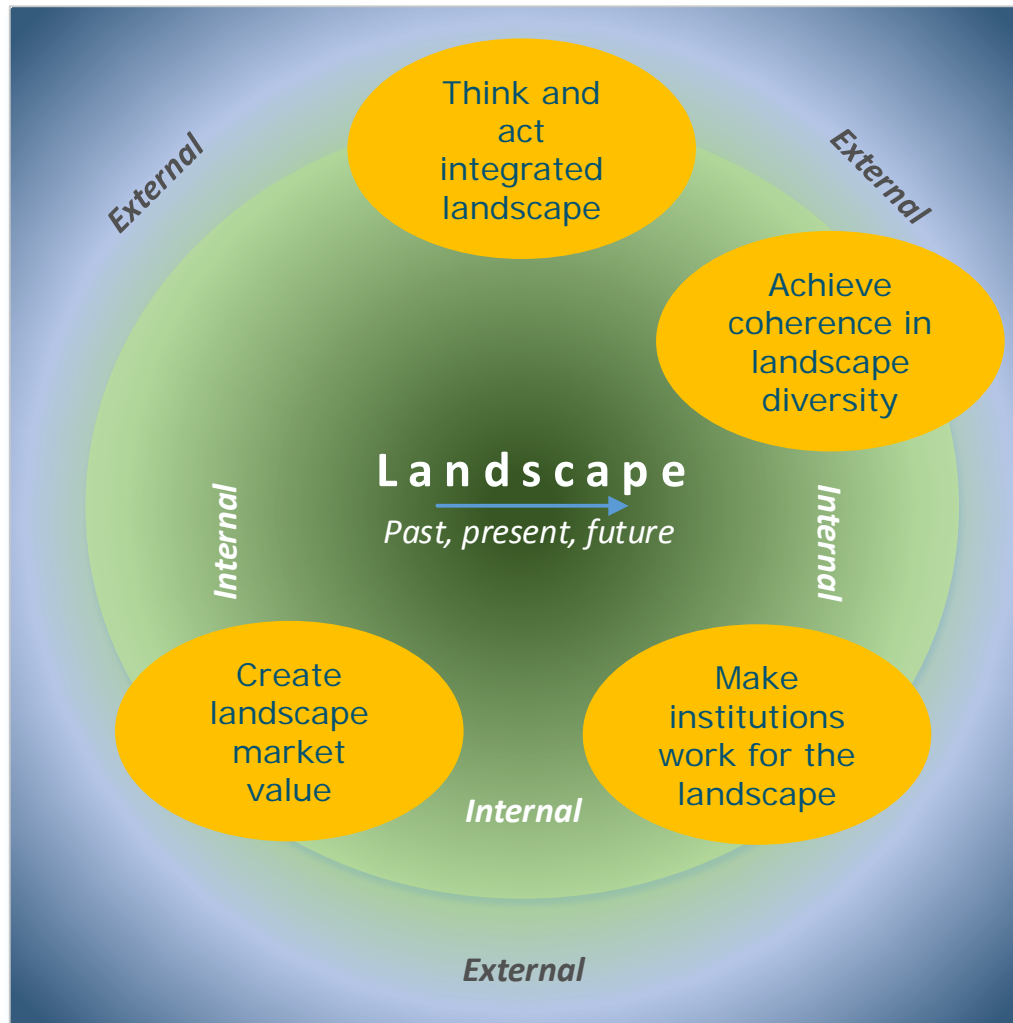


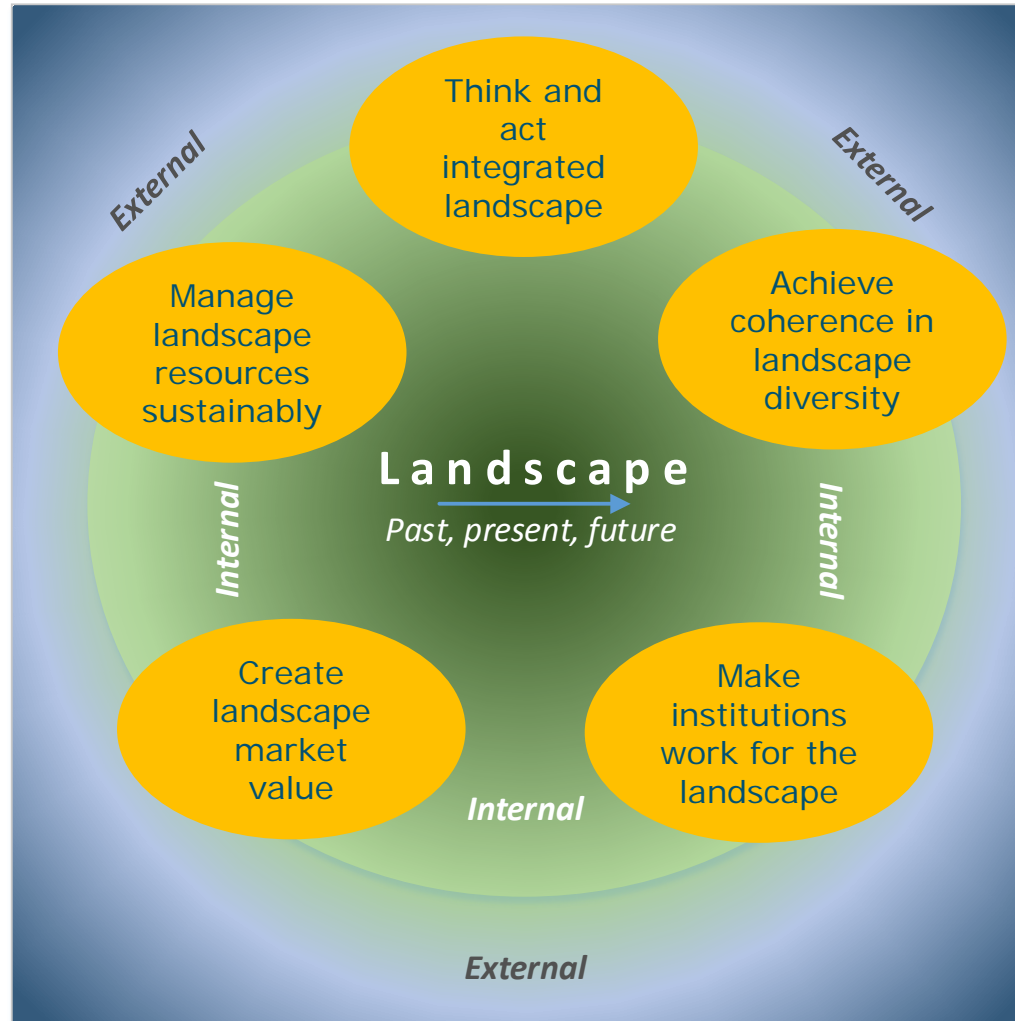


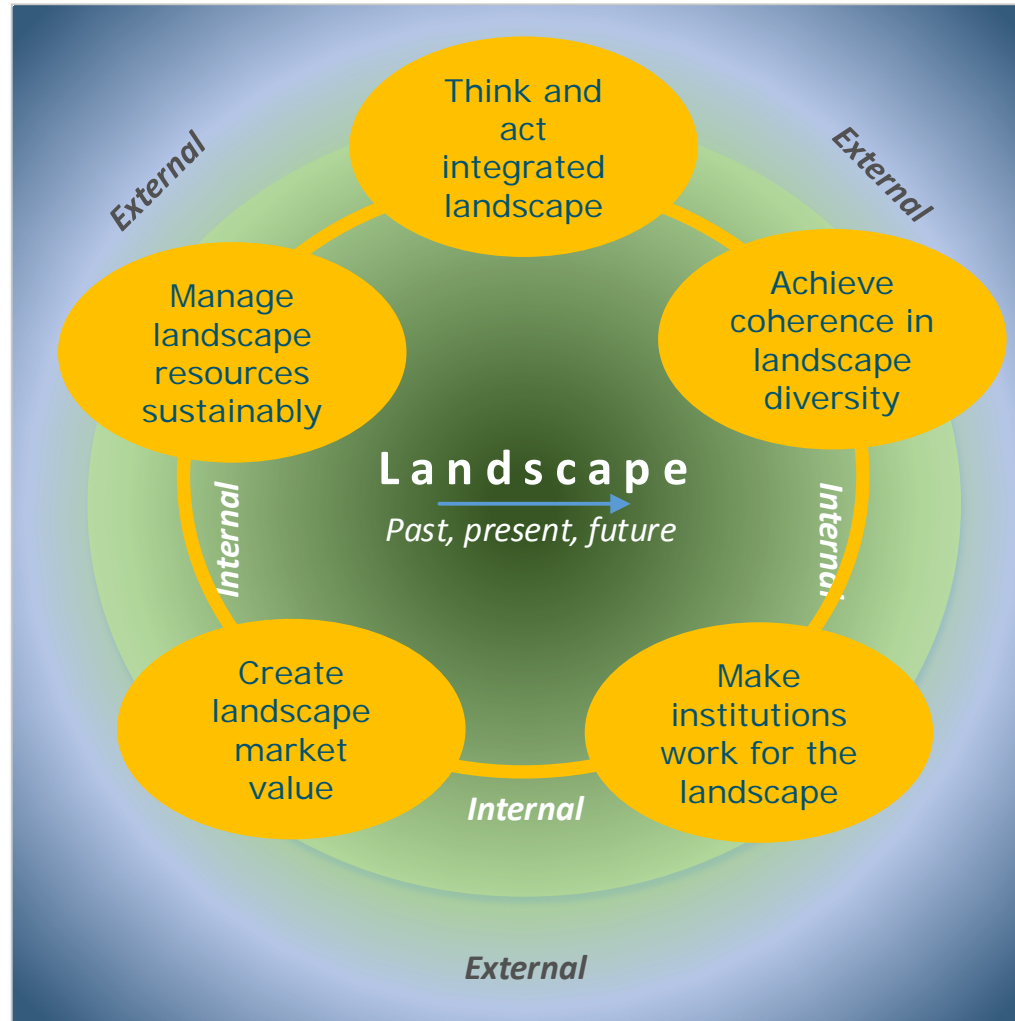






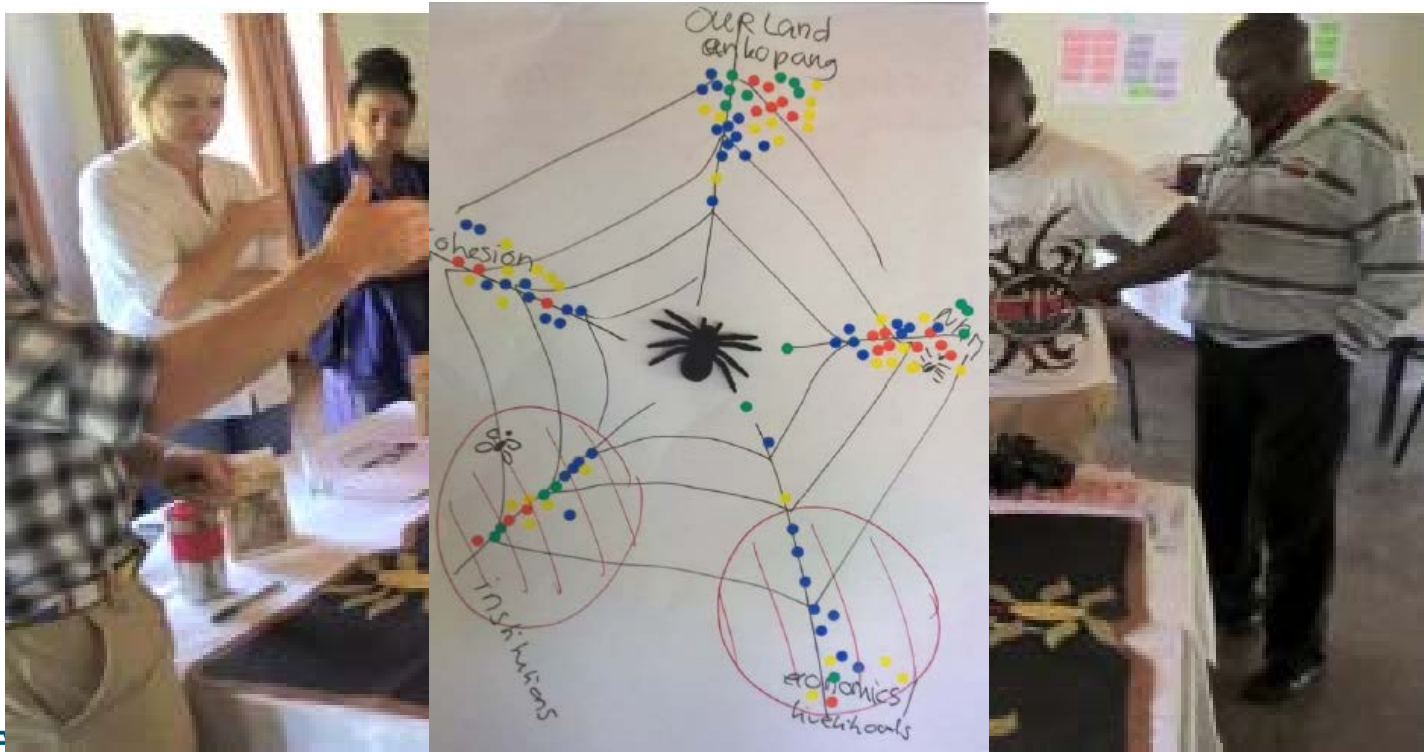






Example from Kenya – South Rift Landscape

1. Understanding the landscape (mapping tools)
2. Defining Landscape Governance and translation to Maasai
3. Defining objectives and indicators
4. Assessing SORALO's capacities in order to strengthen Landscape Governance



Relevance for FLR

- Landscape Governance a prerequisite for FLR
- Gives an insight into strengths & weaknesses of the landscape
- Identifies capacities needed for FLR to take place

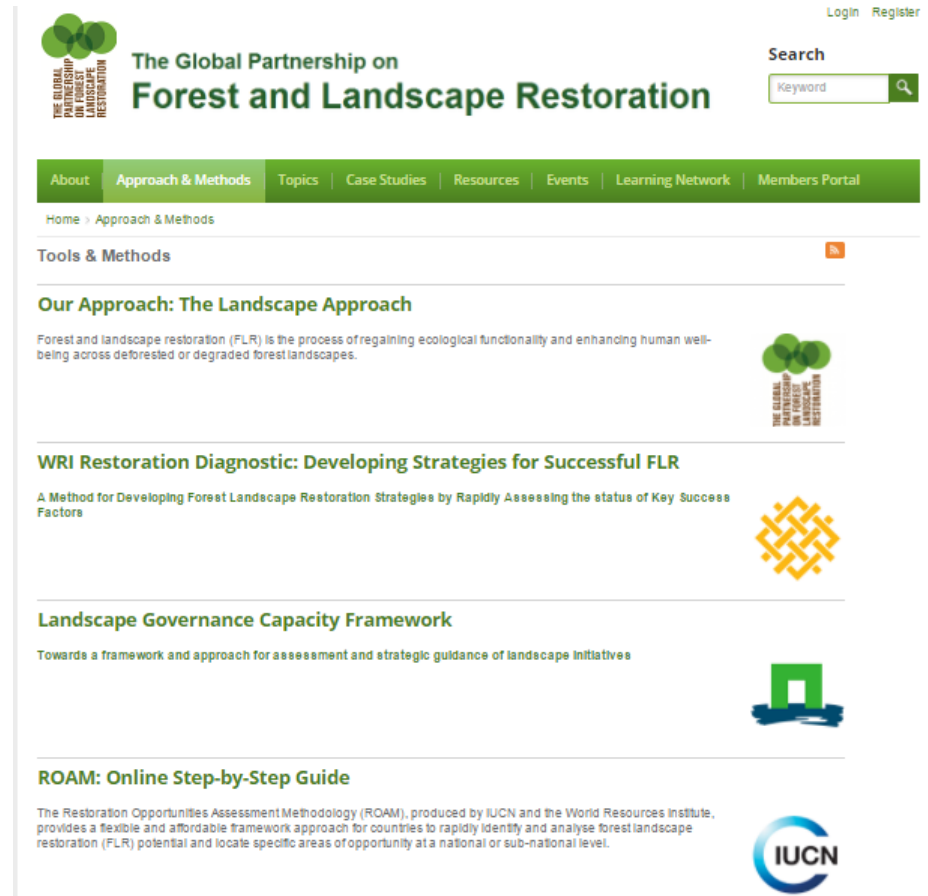


Where to find the framework

<http://www.forestlandscape restoration.org/tool/landscape-governance-capacity-framework>

Contact

Ilse.hennemann@wur.nl



The screenshot shows the homepage of 'The Global Partnership on Forest and Landscape Restoration'. The header includes the organization's logo, name, and a search bar. A green navigation bar contains links to 'About', 'Approach & Methods', 'Topics', 'Case Studies', 'Resources', 'Events', 'Learning Network', and 'Members Portal'. The main content area is titled 'Tools & Methods' and lists three key resources: 'Our Approach: The Landscape Approach', 'WRI Restoration Diagnostic: Developing Strategies for Successful FLR', and 'Landscape Governance Capacity Framework'. Each resource is accompanied by a brief description and a small icon. The 'ROAM: Online Step-by-Step Guide' is also listed at the bottom. The IUCN logo is visible in the bottom right corner.

Login Register

Search
Keyword

About Approach & Methods Topics Case Studies Resources Events Learning Network Members Portal

Home > Approach & Methods

Tools & Methods

Our Approach: The Landscape Approach

Forest and landscape restoration (FLR) is the process of regaining ecological functionality and enhancing human well-being across deforested or degraded forest landscapes.

WRI Restoration Diagnostic: Developing Strategies for Successful FLR

A Method for Developing Forest Landscape Restoration Strategies by Rapidly Assessing the status of Key Success Factors

Landscape Governance Capacity Framework

Towards a framework and approach for assessment and strategic guidance of landscape initiatives

ROAM: Online Step-by-Step Guide

The Restoration Opportunities Assessment Methodology (ROAM), produced by IUCN and the World Resources Institute, provides a flexible and affordable framework approach for countries to rapidly identify and analyse forest landscape restoration (FLR) potential and locate specific areas of opportunity at a national or sub-national level.

IUCN

Thank you!



www.wageningencampus.nl

www.wur.nl