

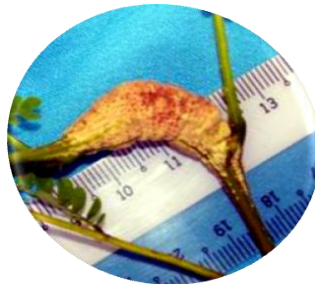


SECONDS CIRCULLAIR

The Impacts of Climate Change to Forest Pests and Diseases in the Tropics

IUFRO International DISEASES AND INSECTS OF TROPICAL FOREST TREES
(Working Party Conference IUFRO 7.02.07)

October 8th - 10th, 2012 Yogyakarta, Indonesia



IMPORTANT DATES

Abstract Submission	30 th June 2012
Abstract Submission for applying sponsorship	10 th June 2012
Full Paper Submission	31 st July 2012
Notification for successful applicants sponsorship	20 th June 2012
Early-registration Payment	30 th April - 31 st July 2012
Late-Registration Payment	1 st August- 30 th September 2012

Introduction

Regarding to global climate change serious impacts to forest pests and diseases in the tropics, the Organizing Committee is pleased to invite you to the “*IUFRO International Diseases and Pests of Tropical Forest Trees Working Party Conference*” (IDPTFTWPC) that will be held in Universitas Gadjah Mada Yogyakarta, Indonesia on **October, 8th - 10th 2012**. In order to up date the status of pests and diseases in the tropics, also growing intensive communication, colaboration and link among the tropical countries, we encourage to achieve working party conference with the main topic as above:

Main Topics of the Conference are:

1. Forest Trees Pests and Diseases Biology and Epidemics
2. Updating Information on the Occurrence of Pests and Diseases in the Planted Forest, Community Forest and Natural Ecosystem
3. Management of Pests and Diseases
4. Emerging Pests and Diseases into New Areas
5. Invasion Pathways
6. Surveillance and Monitoring
7. Novel Associations between Insects and Pathogens
8. Climate Change and Tropical Pests and Diseases of Forest Trees

Conference Language : English

Registration Fees

Low Cost Package Registration including: Scientific activities, Seminar kit, Coffee breaks, Welcome cocktail, Meal (breakfast, lunch and dinner), Printing material, Proceeding, 4 night hotel accomodation (**only for International participants**), one day Field Trip (2 locations)

Field trip : (1). Visiting the central of *Falcataria moluccana* plantation at the community forest of Wonosobo district, (2) Visiting Merapi Mountain with Lava Tours.

Participants	Before 31 July 2012	1 August - 30 September 2012	After 30 September 2012
International	USD 300	USD 375	USD 425
Local/national	IDR 700.000	IDR 800.000	IDR 900.000
International Students	USD 250	USD 275	USD 300
Local Students	IDR 500.000	IDR 600.000	IDR 700.000

Payment

Only bank transfers are acceptable, please, be so kind to respect it.

Bank name: BNI 1946 UGM Branch

SWIFT (BIC): BNINIDJAXX

Beneficiary's Account name: Dwi Tyaningsih Adriyanti, Account Number: 0038792220

(Note: please transfer in full amount).

SPONSORSHIP

In order to support participation of delegation from developing country, sponsorship will be offered at least for 50 selected international and national participants (maximally 600 USD for each international participants and 300 USD for each local participant). Date line for Submission of abstract for applying sponsorship : **May 21th 2012 to June 10th 2012**

Paper :

There will be a data projector and a computer for presenting your papers. Please, bring your presentations on flash drive or CD-ROM. Printed proceedings will be published before the workshop. With author's responsibility of particular proceedings, only formal changes will be done by editors. Before composing a programme, we need to know the last version of your paper or poster title.

GUIDELINES FOR CONTRIBUTORS INTO THE PROCEEDINGS

Paper A4 (21 × 29.7 cm) with margin: 2.5 cm, single-spaced.

TITLE IN CAPITAL LETTERS

Times New Roman CE 12, bold and right centred.

Space – 1 line

FIRST NAME AND FAMILY NAME

Times New Roman CE 12, small capitals, right centred

Full address of the office with zip code and e-mail address

Times New Roman CE 10, italics, right centred.

Space – 1 line

The paper should be written in text editor Microsoft Word, Times New Roman CE 12, normal.

Titles of the chapters: Times New Roman CE 12, bold, Margin – 0.5 cm

Latin words must be written in italics, citations of other authors given in round brackets.

Tables must be numbered by Arabic numbers (Table 1) and then brief and concise title is given - Times New Roman CE 10, above table. Tables are accepted only in text editor Microsoft Word, inserted tables with lines of 0.5, Times New Roman CE 10 b.

Figures must be supplied only the format *.tif or *.jpg. Brief and concise title is given under the figure, centre.

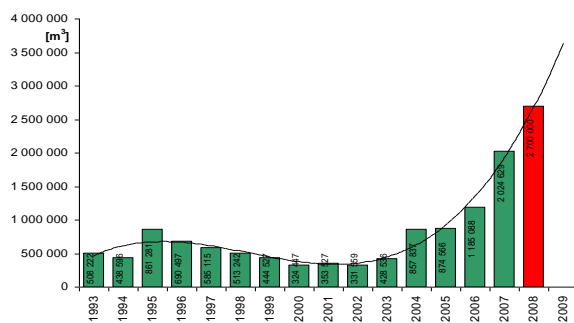


Figure 1 Incidental felling caused by bark beetles in Slovakia

The list of references – titles must be numbered and ordered chronologically. Only the works cited in the text must be given (maximum 20 references). References should be given as follows: family name, abbreviation of the first name, year of publishing: full title of referred work in original language, title of the journal, volume, issue/number, page of referred part. For monograph it should be given also the place of publishing, publisher, and total number of pages.

In references in the Proceedings it is given as In family name, abbreviation of the first name of editor (compiler), title of the proceedings, place of publishing, publisher and page(s) of the cited part. Latin zoological and botanical names must be given in italics. If the number of the authors is six and less all authors are mentioned in the citation. If they are more than six authors, only the first three authors are given and *et al.*

Examples:

MINĎÁŠ, J., 1997: Premřzanie lesných pôd v stredohorskej oblasti Poľany. In PICHLER, V. (ed.): Pôda v súčasných environmentálnych podmienkach. Zvolen, TU, p. 137 – 142.

HOUSTON, D. R., 1975: Beech Bark Disease, the aftermath forests are structured for a new outbreak. *Journal of Forestry*, 73(10), p. 660 – 63.

PARKER, E. J., 1974: Beech Bark Disease. *For. Comm. For. Rec.*, (96), 15 pp.

Text writing:

Words in the text of the contribution should not be divided. Lines should be ended with enter only at the end of the title, paragraph, etc. One must be careful with using the letter O and zero, the letter l with number one and in decimal figures to use point not comma. Space should be used in the text after punctuation letters and to use round brackets. Abbreviations, marks, formulas, equations, foreign letters should be written consistently and correctly. Formulas and equations with indexes should be written clearly and Arabic numbers in square brackets should number equations on the right margin.

Extent of the paper – maximally 10 pages

Please, send the papers to the following e-mail address: iufro070207@gmail.com or tatarahayu@yahoo.com

Posters

The format of the posters should not exceed A0 = 84 cm width x 118 cm height.

Posters will be installed in the Magister Management (MM) Hotel, Universitas Gadjah Mada, Yogyakarta during the registration.

Please, kindly inform us about any requests related to the poster presentation.

Practical information

Accommodation : Magister Management (MM) Hotel, Universitas Gadjah Mada, Yogyakarta.

Reservations of rooms were made by organizers according to the registration forms. Special arrangements will be managed during the registration.

Transport :

We will provide local transportation for participants arrival by plane, from and to Airport and Hotel during the conference. Time schedule of picking-up cars will be announced after the finalizing overview of the flights. If necessary we will send you a special map, don't hesitate to contact us for any assistance.

With Best Wishes,

Co-ordinator of WP. 7.02.07

Dr. Sri Rahayu